

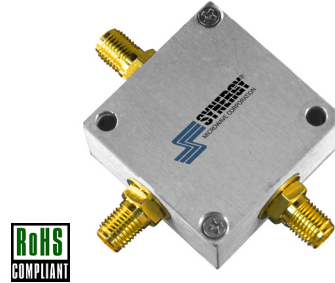
PHASE SHIFTER

CONNECTORIZED MODEL: PK-711S

4.75 - 5.25 MHz

FEATURES:

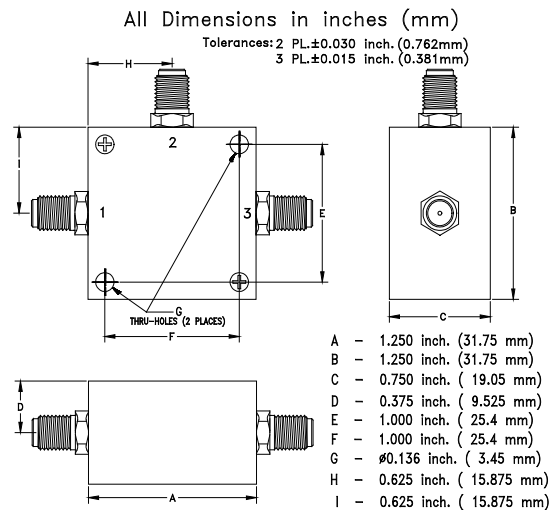
- ▶ Excellent Performance
- ▶ Low VSWR
- ▶ High Efficiency



SPECIFICATIONS (Rev. C 06/08/21)

Frequency	4.75 - 5.25 MHz	
Insertion Loss (dB)	Typ.	Max.
	1.2	2.0
Control Bandwidth	DC - 50 kHz (Min.)	
Control Voltage	0 - 15 VDC	
Phase Shift	180° (Min.)	
VSWR	1.5:1 (Max.)	
Input Power	-10 dBm (Max.)	
Impedance	50 Ohms (Nom.)	
Operating Temperature Range	-55 to +85 °C	

Package # 110LF



PORT CONFIGURATION

Input	Output	Control
1	3	2

Note:

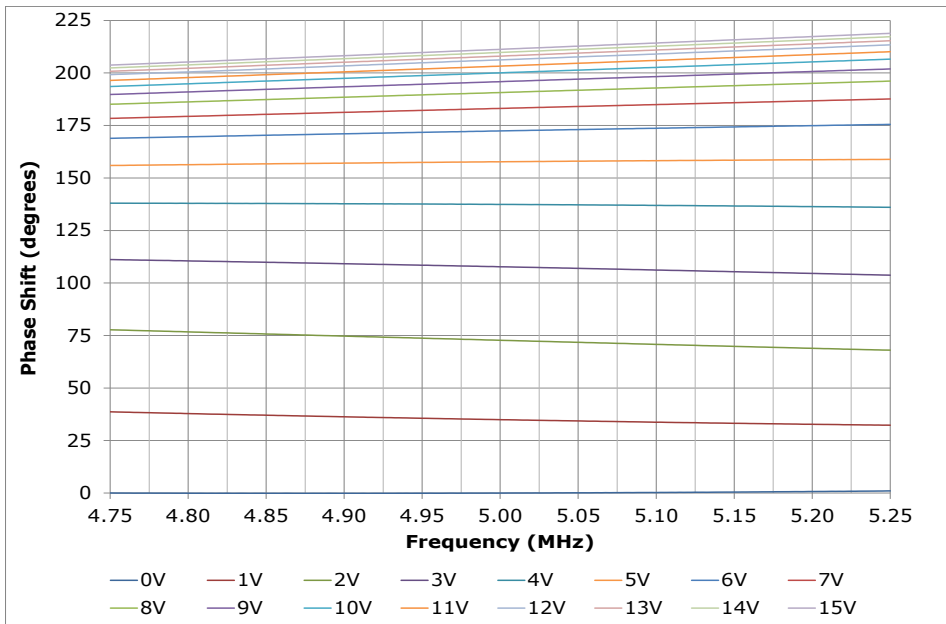
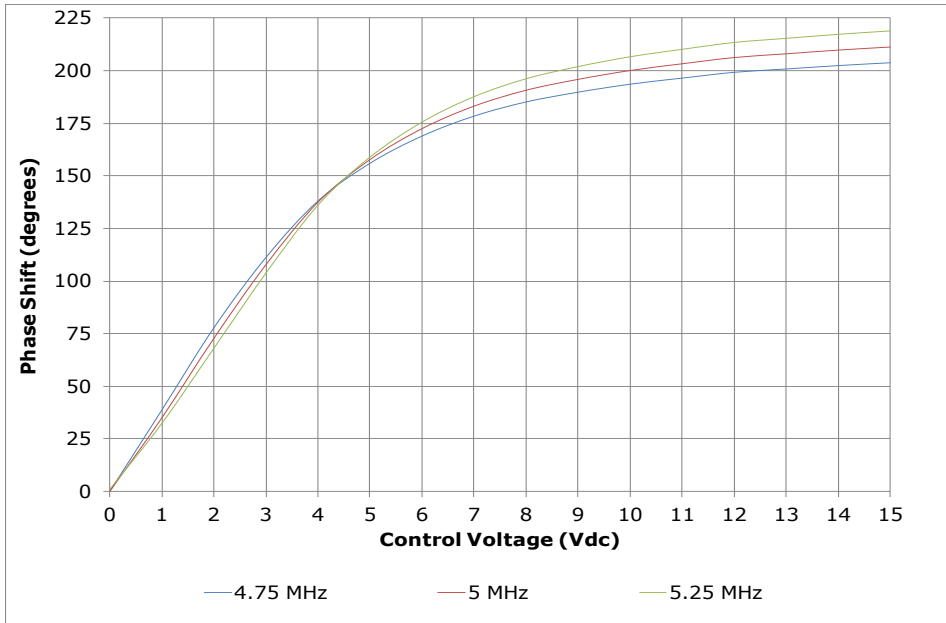
For other connector styles, replace part number suffix "S" with, "B" for BNC or "N" for Type N connector type. All connectors are female unless noted otherwise.

PHASE SHIFTER

CONNECTORIZED MODEL: PK-711S

4.75 - 5.25 MHz

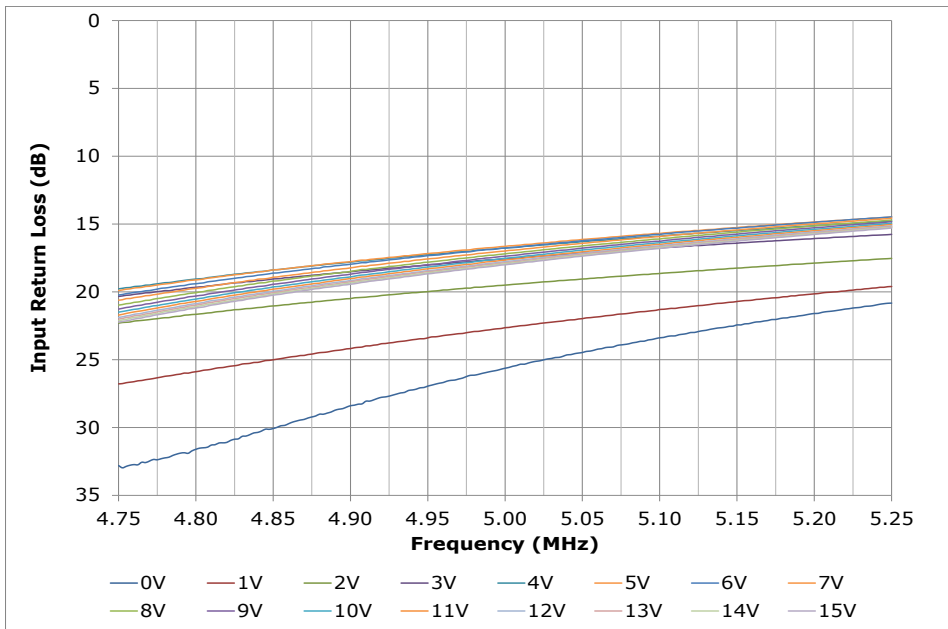
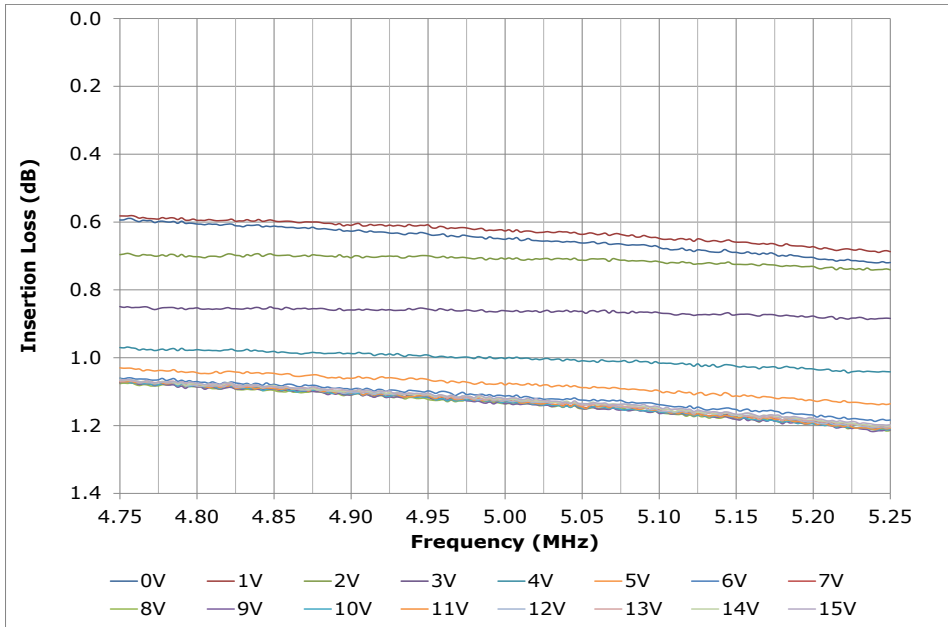
PERFORMANCE PLOTS



PHASE SHIFTER CONNECTORIZED MODEL: PK-711S

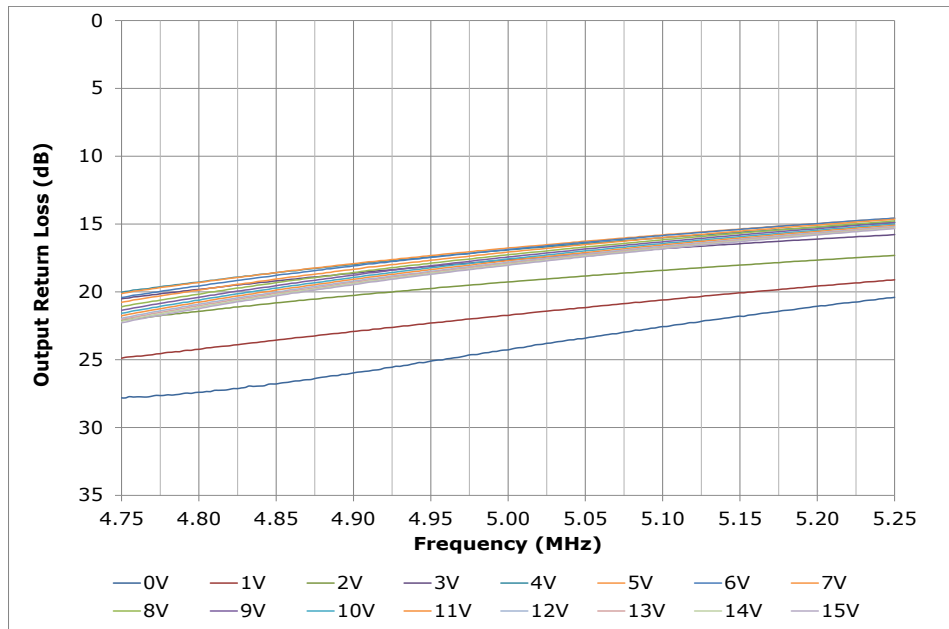
4.75 - 5.25 MHz

PERFORMANCE PLOTS



PHASE SHIFTER CONNECTORIZED MODEL: PK-711S

4.75 - 5.25 MHz



PERFORMANCE PLOTS