

VOLTAGE CONTROLLED OSCILLATOR

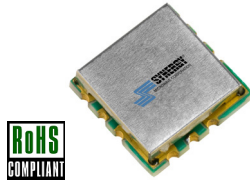
SURFACE MOUNT MODEL: DCO340465-5

OPTIMIZED BANDWIDTH

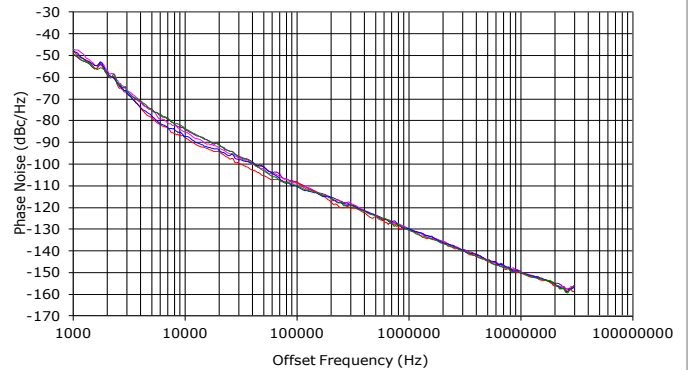
3400 - 4650 MHz

FEATURES:

- ▶ Miniature Size, Surface Mount (0.3" x 0.3")
- ▶ Exceptional Phase Noise Performance
- ▶ Fast Tuning
- ▶ Planar Resonator Construction



Phase Noise



SPECIFICATIONS (Rev. A 01/05/15)

Frequency	3400 - 4650 MHz	
Tuning Voltage	See table below.	
Bias Voltage	+5 VDC @ 30 mA (Max.)	
Output Power	0 dBm (Min.)	
Tuning Sensitivity	70 - 135 MHz/V (Typ.)	
Output Impedance	50 Ohms (Nom.)	
Harmonic Suppression	13 dB (Typ.)	
Frequency Pulling	15 MHz (Typ. @ 1.75:1 VSWR)	
Frequency Pushing	10 MHz/V (Typ.)	
Tuning Port Capacitance	30 pF (Typ.)	
Typical Phase Noise	Offset	dBc/Hz
	10 kHz	-86
	100 kHz	-109
Operating Temperature Range	-40 to +85 °C	

Guaranteed Tuning Specifications

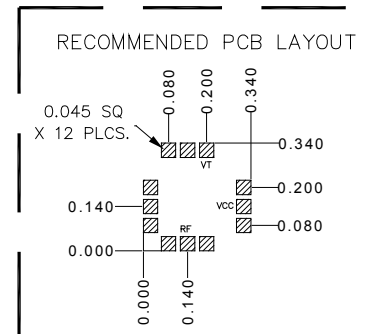
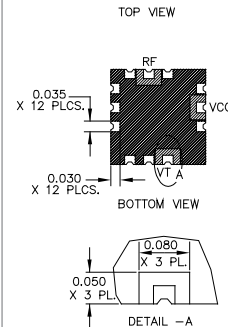
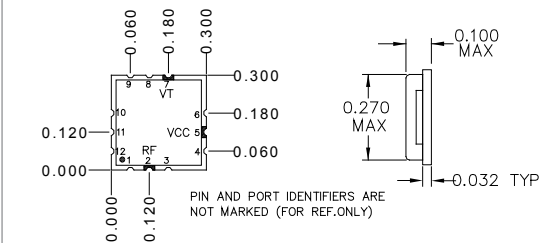
Tuning Voltage (V)	Frequency (MHz)
0.5	3400 (Max.)
5	3380 (Min.)
8	3880 (Min.)
12	4300 (Min.)
18	4650 (Min.)

Absolute Maximum Ratings

Storage Temp. Range	-55 to +125 °C
Bias Voltage	+5.5 V
Tuning Voltage	+28 V
DC Voltage Applied to RF Out	±25 V

Patent : <http://www.synergymwave.com/patents>

Package # 343



PACKAGE MOUNTING: SEE APPLICATION NOTE AN7300 & AN7302

TOLERANCES ON THREE DECIMAL PLACES= ± 0.015

DIMENSIONS ARE IN INCHES. ALL UNLABELED PINS TO BE GROUNDING.

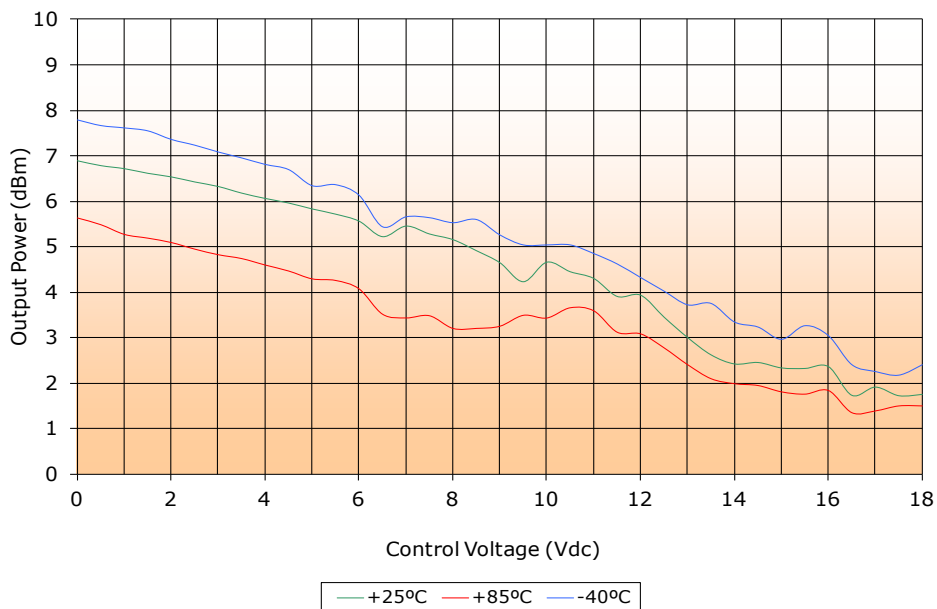
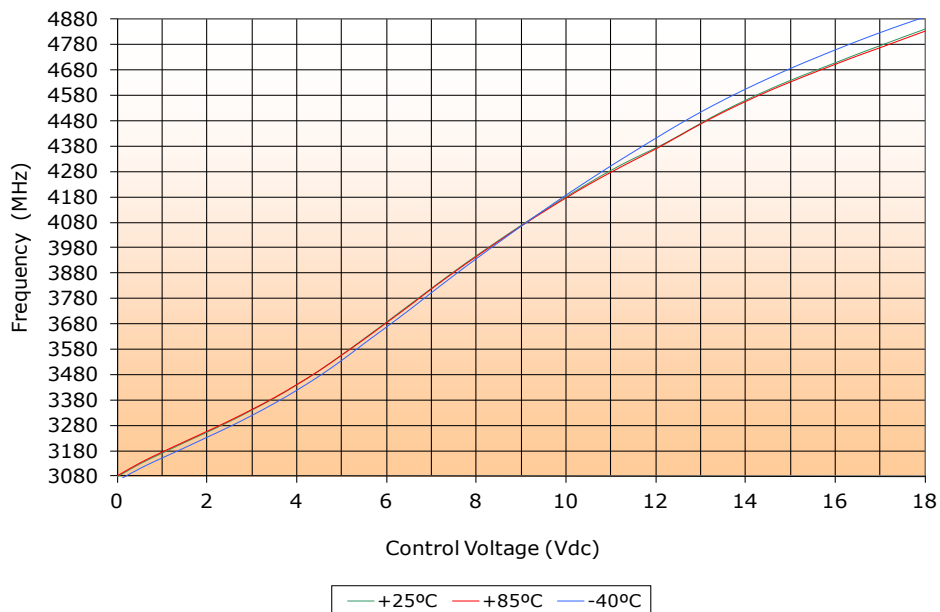
VOLTAGE CONTROLLED OSCILLATOR

SURFACE MOUNT MODEL: DCO340465-5

OPTIMIZED BANDWIDTH

3400 - 4650 MHz

PERFORMANCE PLOTS



VOLTAGE CONTROLLED OSCILLATOR

SURFACE MOUNT MODEL: DCO340465-5

OPTIMIZED BANDWIDTH

3400 - 4650 MHz

PERFORMANCE PLOTS

