

2-WAY POWER DIVIDER

MODEL: DSK-719S

FREQUENCY

1 - 3000 MHz

FEATURES:

- ▶ Ultra-Wide Bandwidth
- ▶ Low Loss
- ▶ Closely Controlled Phase/Amplitude Unbalance



SPECIFICATIONS (Rev. B 08/30/06)

Frequency	1 - 3000 MHz	
Insertion Loss (dB)	Typ.	Max.
	0.6	1.0
Isolation (dB)	Typ.	Min.
	18	13
Phase Unbalance (Deg.)	Typ.	Max.
	0.3°	2.0°
Amplitude Unbalance (dB)	Typ.	Max.
	0.1	0.4
Output Impedance	50 Ohms (Nom.)	
VSWR	Input	1.8:1 (Typ.)
	Output	1.4:1 (Typ.)
Input Power	1 Watt (Max.)	
Operating Temperature Range	-40 to +85° C	

Package # 110							
<table border="1"> <thead> <tr> <th colspan="2">PORT CONFIGURATION</th> </tr> <tr> <th>Input</th> <th>Output</th> </tr> </thead> <tbody> <tr> <td style="text-align: center;">2</td> <td style="text-align: center;">1,3</td> </tr> </tbody> </table>		PORT CONFIGURATION		Input	Output	2	1,3
PORT CONFIGURATION							
Input	Output						
2	1,3						

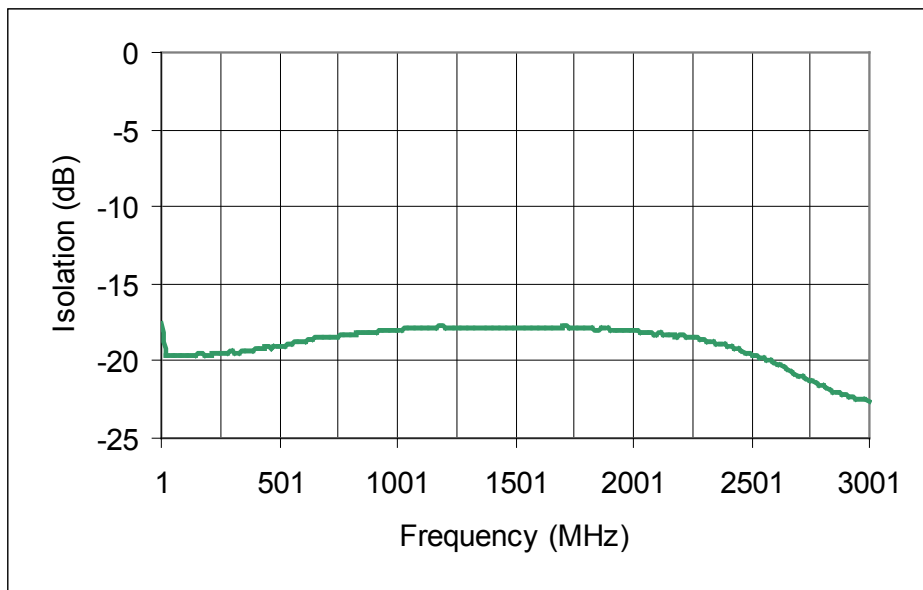
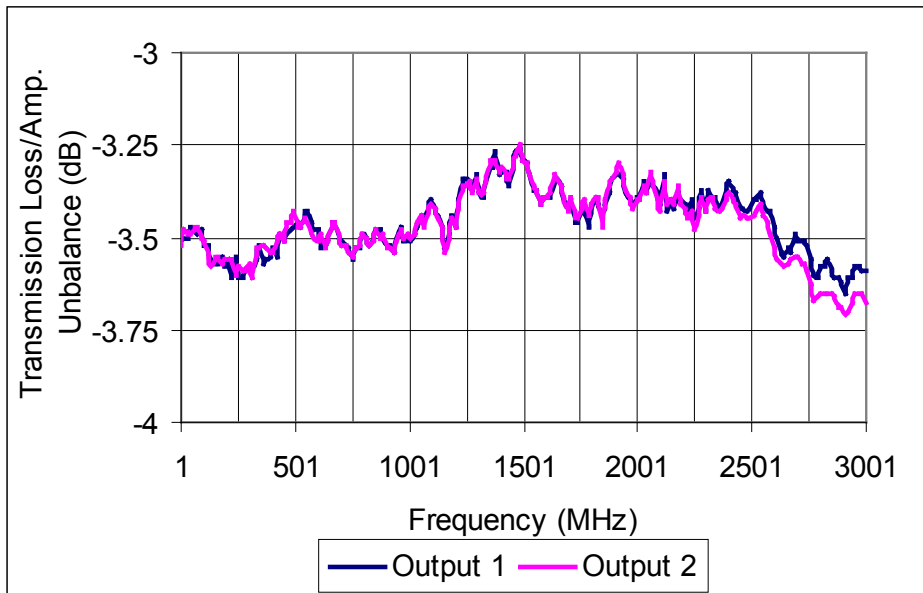
2-WAY POWER DIVIDER

MODEL: DSK-719S

FREQUENCY

1 - 3000 MHz

Data @ 25°C



PERFORMANCE PLOTS

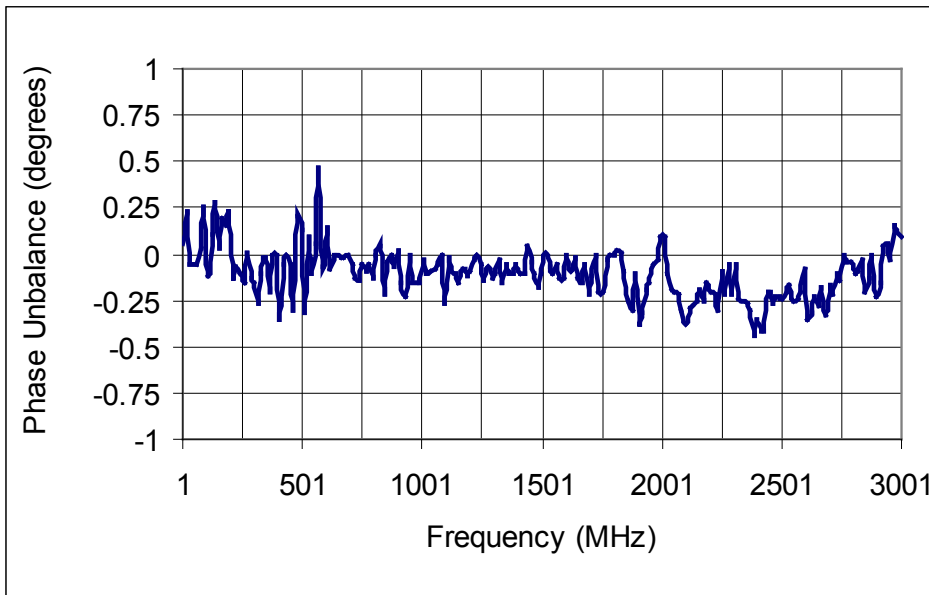
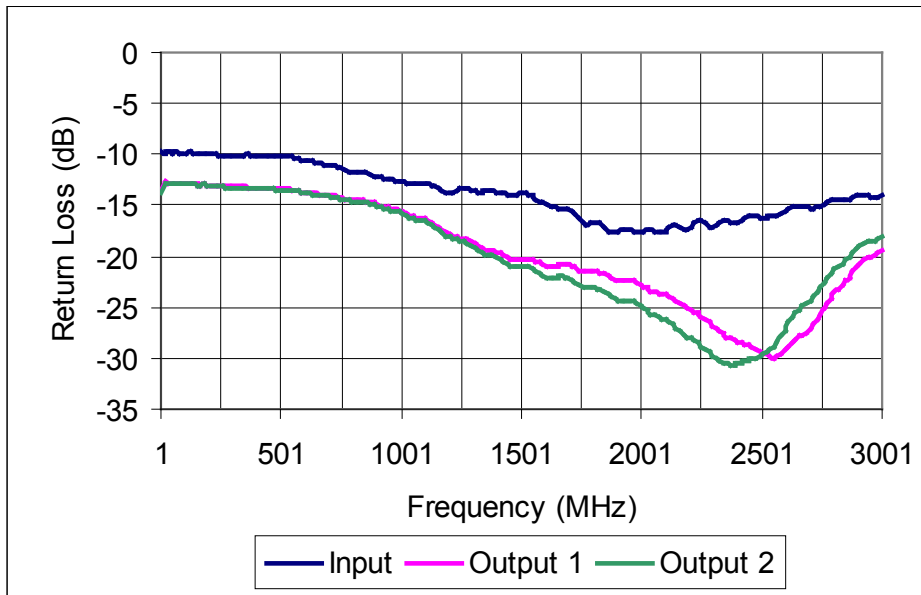
2-WAY POWER DIVIDER

MODEL: DSK-719S

FREQUENCY

1 - 3000 MHz

Data @ 25°C



PERFORMANCE PLOTS

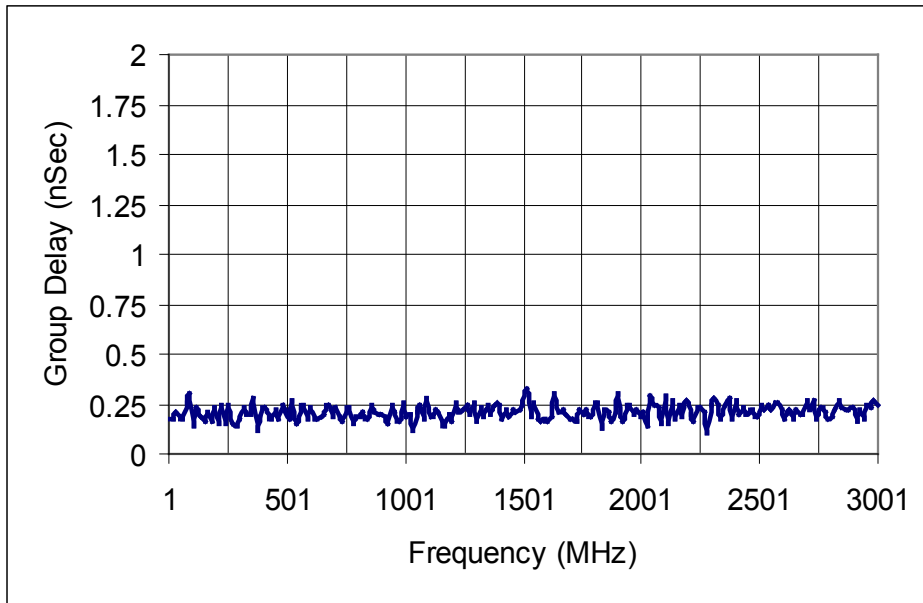
2-WAY POWER DIVIDER

MODEL: DSK-719S

FREQUENCY

1 - 3000 MHz

Data @ 25°C



PERFORMANCE PLOTS