

# DIELECTRIC RESONATOR OSCILLATOR

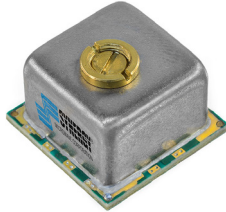
## SURFACE MOUNT MODEL: SDR01500-8

### FREQUENCY

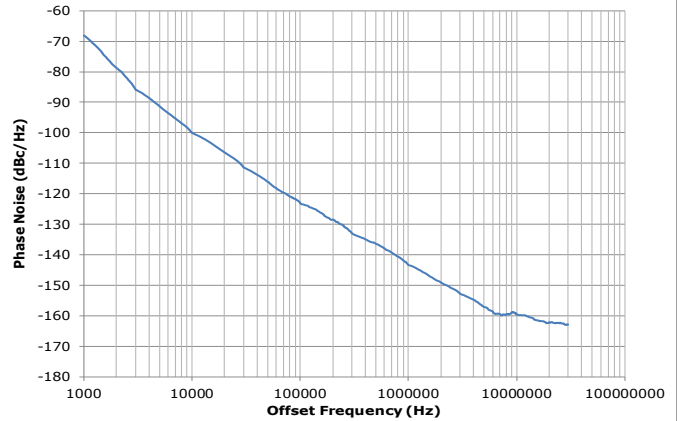
### 15 GHz

#### FEATURES:

- ▶ Extended Operating Temperature Range
- ▶ Exceptional Phase Noise Performance
- ▶ Small Size Surface Mount
- ▶ Lead Free RoHS Compliant



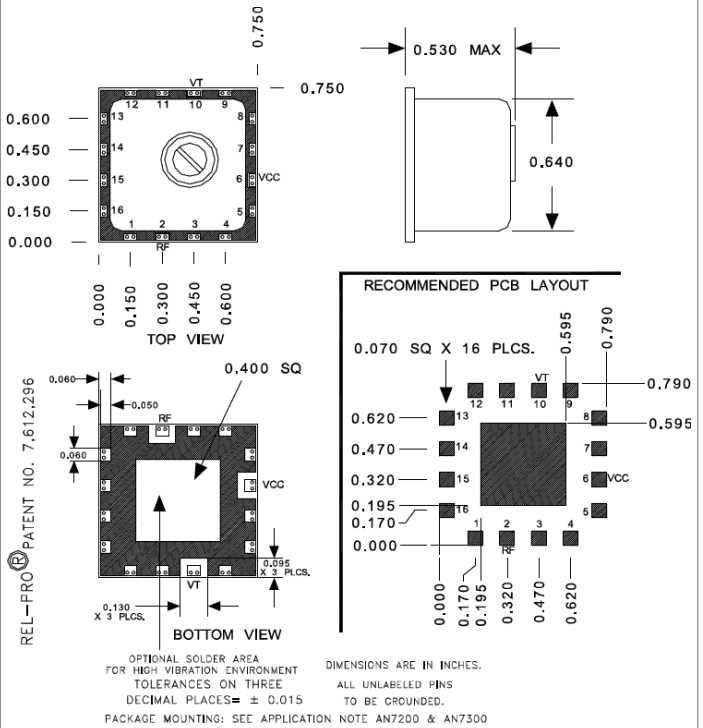
#### Phase Noise



#### SPECIFICATIONS

Frequency	15 GHz	
Tuning Voltage	1 - 12 VDC	
Bias Voltage	+8 VDC @ 26 mA (Max.)	
Output Power	-6 dBm (Min.)	
Tuning Sensitivity	1 MHz/V (Typ.)	
Thermal Drift	4 ppm / °C (Typ.)	
Output Impedance	50 Ohms (Nom.)	
Harmonic Suppression	55 dBc (Typ.)	
Frequency Pulling	1.5 MHz (Typ. @ 1.75:1 VSWR)	
Frequency Pushing	1 MHz/V (Typ.)	
Tuning Port Capacitance	10 pF (Typ.)	
Phase Noise @ 25°C	Offset	dBc/Hz (Typ.)
	10 kHz	-99
	100 kHz	-122
	1 MHz	-142
	10 MHz	-160
Operating Temperature Range	-20 to +70 °C	

Package # 396



#### Absolute Maximum Ratings

Storage Temp. Range	-45 to +90 °C
Bias Voltage	+8.5 V
Tuning Voltage	+16 V
DC Voltage Applied to RF Out	±25 V

#### Notes:

1. Tuning of the mechanical screw can cause significant shifts in frequency and cause irreversible damage to the product. Warranty is void if tuning screw exceeds ±0.5 turn max.
2. Test data measured with bias voltage at +8V.
3. Specifications guaranteed at 15 GHz.

Copyright © Synergy Microwave Corporation  
 201 McLean Boulevard • Paterson, New Jersey 07504 USA  
 Tel: (973) 881-8800 • Fax: (973) 881-8361  
 E-Mail: sales@synergymwave.com • Website: <http://www.synergymwave.com>  
 Patents : <http://www.synergymwave.com/patents>

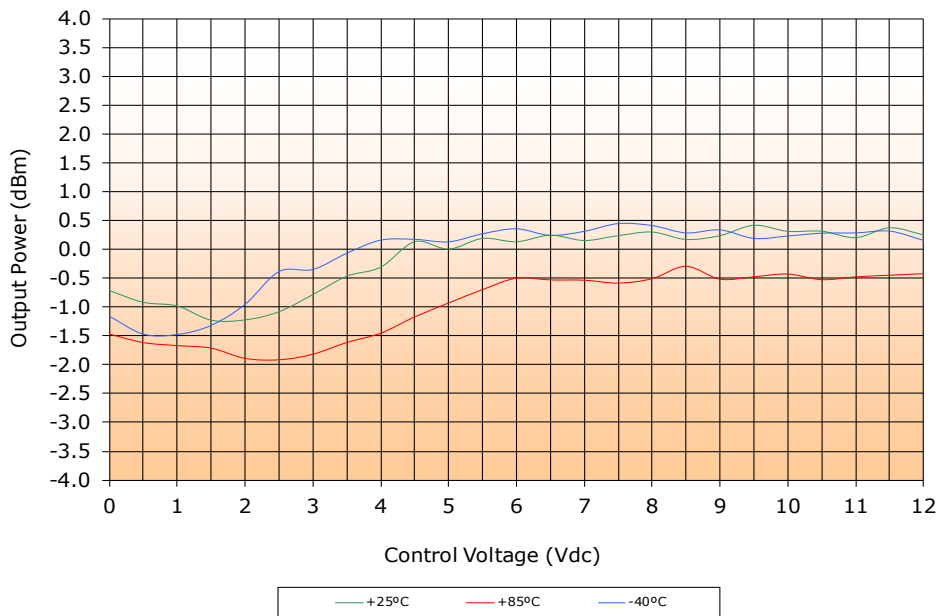
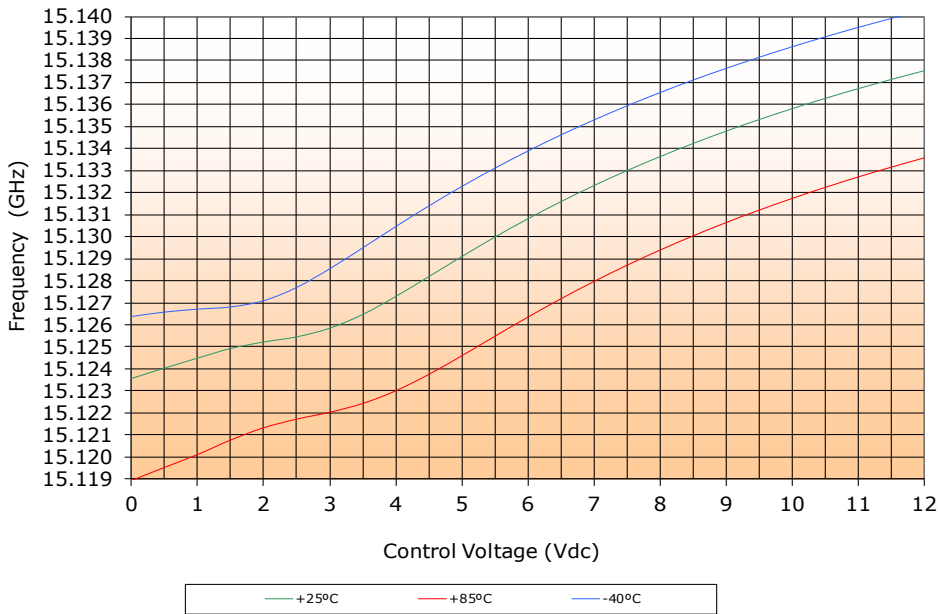


# DIELECTRIC RESONATOR OSCILLATOR SURFACE MOUNT MODEL: SDRO1500-8

FREQUENCY

15 GHz

PERFORMANCE PLOTS

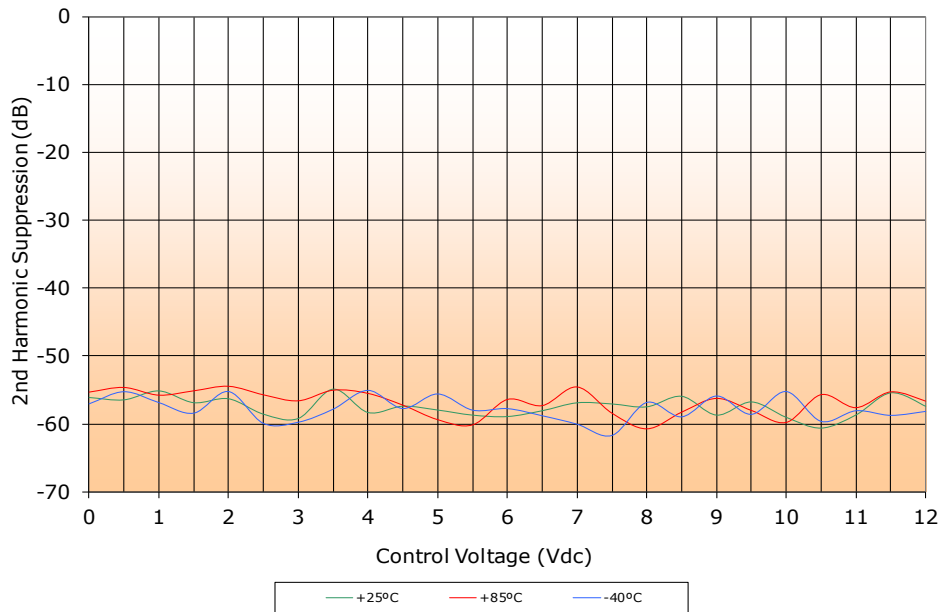
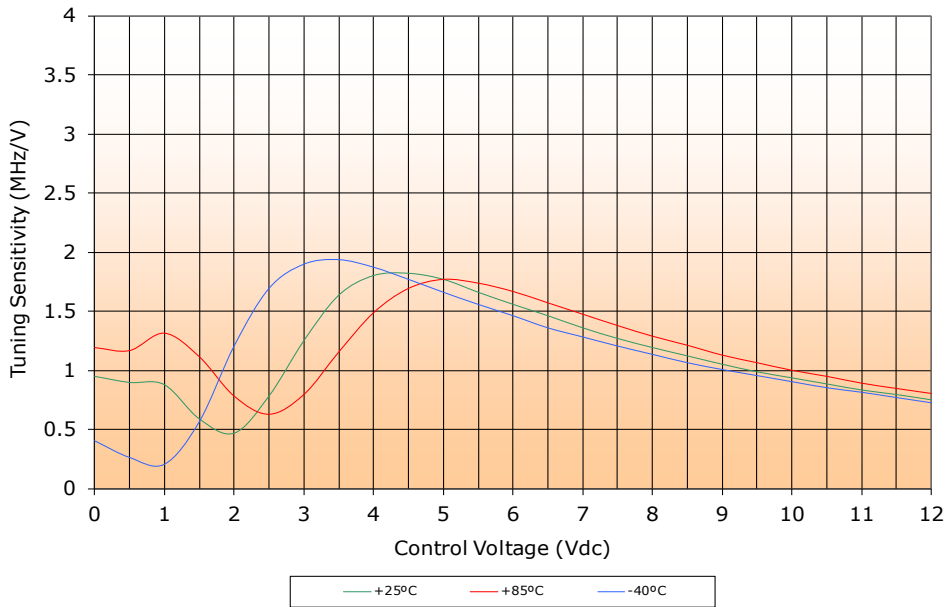


# DIELECTRIC RESONATOR OSCILLATOR SURFACE MOUNT MODEL: SDRO1500-8

FREQUENCY

15 GHz

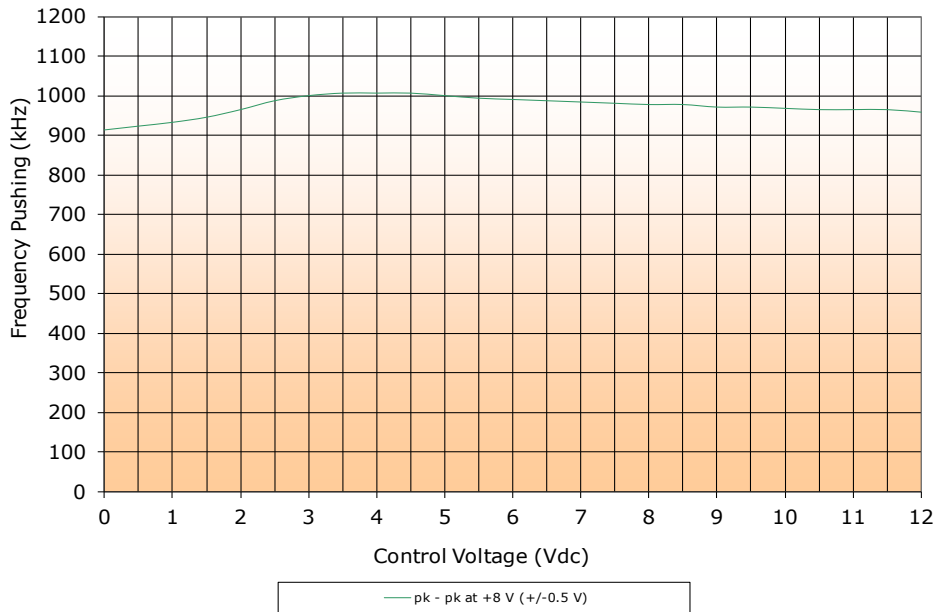
PERFORMANCE PLOTS



# DIELECTRIC RESONATOR OSCILLATOR SURFACE MOUNT MODEL: SDRO1500-8

FREQUENCY

15 GHz



PERFORMANCE PLOTS