

# BAND PASS FILTER

## MODEL FNS-450

**OPTIMIZED BANDWIDTH**

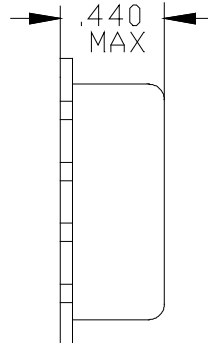
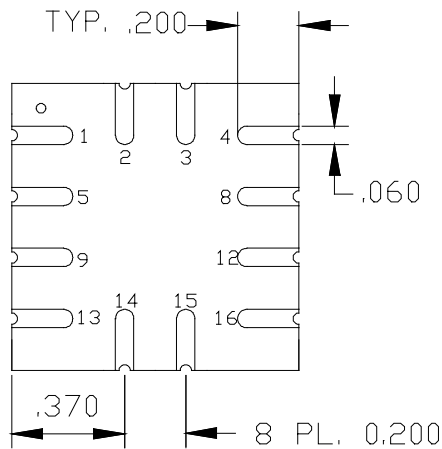
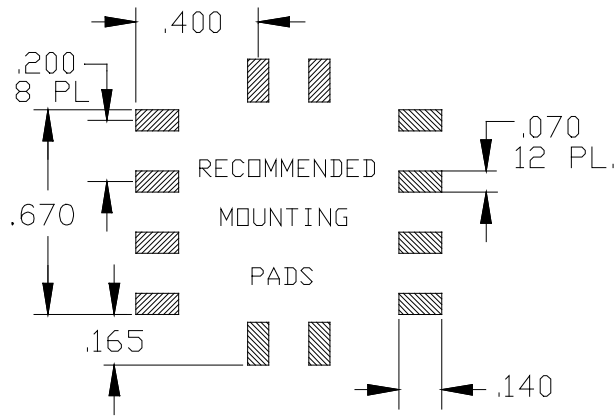
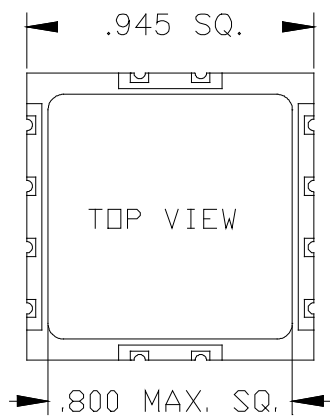
**F<sub>c</sub> = 450 MHz**

**SPECIFICATIONS:**

<b>Center Frequency:</b>	450 MHz	<b>Input Power</b>	1 Watt (Max)
<b>Passband:</b>	428.6 - 472.5 MHz	<b>Impedance:</b>	50 Ohms (Nom)
<b>Passband I. Loss:</b>	3.0 dB (Max)	<b>VSWR:</b>	1.5:1 (Typ)
<b>35 dB Bandwidth:</b>	214.3 - 945 MHz	<b>Operating Temp. Range:</b>	-20° to +70° C



**MECHANICAL OUTLINE:124S**



PIN-OUT	
Input	1
Output	16
Case Ground	All Others

# BAND PASS FILTER MODEL FNS-450

OPTIMIZED BANDWIDTH

$F_c = 450$  MHz

## PERFORMANCE PLOTS

