

LOW PASS FILTERS

LEADLESS SURFACE-MOUNT MODELS Low Cost



Fc (MHz) LOSS = 3 dB (Nom)	PASSBAND LOSS < 1 dB (MHz)	ATTENUATION FREQUENCY (MHz)			PASS BAND VSWR (TYP)	PACKAGE	PIN-OUT (See Below)	MODEL
		>35 dB	>23 dB	>20 dB				
12	DC-10.7	21	19	16	1.70:1	102S	1	FLS-12
24	DC-21.4	42	37	32	1.70:1	102S	1	FLS-24
33	DC-30	58	51	44	1.70:1	102S	1	FLS-33
55	DC-50	96	85	74	1.70:1	102S	1	FLS-55
66	DC-60	115	102	89	1.70:1	102S	1	FLS-66
77	DC-70	135	120	103	1.70:1	102S	1	FLS-77
100	DC-92	175	155	133	1.70:1	102S	1	FLS-100
154	DC-140	270	235	208	1.70:1	102S	1	FLS-154
220	DC-200	385	340	300	1.70:1	102S	1	FLS-220
330	DC-300	575	510	445	1.70:1	102S	1	FLS-330
495	DC-450	865	765	665	1.70:1	102S	1	FLS-495
570	DC-520	995	880	765	1.70:1	102S	1	FLS-570
660	DC-600	1160	1020	890	1.70:1	102S	1	FLS-660
770	DC-700	1345	1185	1000	1.70:1	102S	1	FLS-770
825	DC-750	1445	1360	1275	1.70:1	102S	1	FLS-825
850	DC-780	1485	1315	1130	1.70:1	102S	1	FLS-850
965	DC-875	1690	1595	1495	1.70:1	102S	1	FLS-965
1100	DC-1000	1925	1815	1700	1.70:1	102S	1	FLS-1100

New! LEADLESS SURFACE-MOUNT MODELS ULTRA LOW LOSS / HIGH SUPPRESSION



PASSBAND (MHz)	PASSBAND I. LOSS (dB) (TYP)	ATTENUATION FREQUENCY (MHz)		VSWR (In/Out) (TYP/MAX)	GROUP DELAY VARIATION ns (TYP)	PACKAGE	MODEL
		>50 dB	>60 dB				
DC-1350	0.60	2238	2700	1.25:1	0.65	243*	LPS-1350
DC-2000	1.0	2800	3040	1.25:1	1.15	243*	LPS-2000

NOTE: All units meet or exceed applicable MIL-F-18327.
For other frequencies and impedances please contact us.
Impedance is 50 Ohms for all models.

PIN-OUT TABLE

INPUT	OUTPUT	CASE GROUND
1	8	All Other

* For pin location and package outline drawings, see back pages.

LOW PASS FILTERS

8 PIN - RELAY HEADER Low Cost



Fc (MHz) LOSS = 3 dB (Nom)	PASSBAND LOSS < 1 dB (MHz)	ATTENUATION FREQUENCY (MHz)			PASS BAND VSWR (TYP)	PACKAGE	PIN-OUT (See Below)	MODEL
		>35 dB	>23 dB	>20 dB				
12	DC-10.7	21	19	16	1.70:1	102	1	FLP-12
24	DC-21.4	42	37	32	1.70:1	102	1	FLP-24
33	DC-30	58	51	44	1.70:1	102	1	FLP-33
55	DC-50	96	85	74	1.70:1	102	1	FLP-55
66	DC-60	115	102	89	1.70:1	102	1	FLP-66
77	DC-70	135	120	103	1.70:1	102	1	FLP-77
100	DC-92	175	155	133	1.70:1	102	1	FLP-100
154	DC-140	270	235	208	1.70:1	102	1	FLP-154
220	DC-200	385	340	300	1.70:1	102	1	FLP-220
330	DC-300	575	510	445	1.70:1	102	1	FLP-330
495	DC-450	865	765	665	1.70:1	102	1	FLP-495
570	DC-520	995	880	765	1.70:1	102	1	FLP-570
660	DC-600	1160	1020	890	1.70:1	102	1	FLP-660
770	DC-700	1345	1185	1000	1.70:1	102	1	FLP-770
825	DC-750	1445	1360	1275	1.70:1	102	1	FLP-825
850	DC-780	1485	1315	1130	1.70:1	102	1	FLP-850
965	DC-875	1690	1595	1495	1.70:1	102	1	FLP-965
1100	DC-1000	1925	1815	1700	1.70:1	102	1	FLP-1100

NOTE: All units meet or exceed applicable MIL-F-18327.
For other frequencies and impedances please contact us.
Impedance is 50 Ohms for all models.

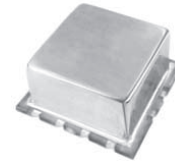
For pin location and package outline drawings, see back pages.

PIN-OUT TABLE

INPUT	OUTPUT	CASE GROUND
1	8	All Other

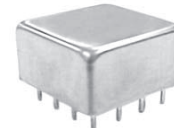
LOW PASS FILTERS

LEADLESS SURFACE-MOUNT MODELS HIGH SUPPRESSION



Fc (MHz) LOSS = 3 dB (Nom)	PASSBAND LOSS < 2 dB (MHz)	ATTENUATION FREQUENCY (MHz)			PASS BAND VSWR (TYP)	PACKAGE	PIN-OUT (See Below)	MODEL
		>50 dB	>30 dB	>20 dB				
12	DC-10.7	21	19	16	1.70:1	124S	1	FLHS-12
24	DC-21.4	42	37	32	1.70:1	124S	1	FLHS-24
33	DC-30	58	51	44	1.70:1	124S	1	FLHS-33
55	DC-50	96	85	74	1.70:1	124S	1	FLHS-55
66	DC-60	115	102	89	1.70:1	124S	1	FLHS-66
77	DC-70	135	120	103	1.70:1	124S	1	FLHS-77
154	DC-140	270	235	208	1.70:1	124S	1	FLHS-154
220	DC-200	385	340	300	1.70:1	124S	1	FLHS-220
330	DC-300	575	510	445	1.70:1	124S	1	FLHS-330
495	DC-450	865	765	665	1.70:1	124S	1	FLHS-495
660	DC-600	1160	1020	890	1.70:1	124S	1	FLHS-660
825	DC-750	1445	1360	1275	1.70:1	124S	1	FLHS-825
965	DC-875	1690	1595	1495	1.70:1	124S	1	FLHS-965
1100	DC-1000	1925	1815	1700	1.70:1	124S	1	FLHS-1100

24 PIN - THROUGH HOLE MOUNT HIGH SUPPRESSION



Fc (MHz) LOSS = 3 dB (Nom)	PASSBAND LOSS < 2 dB (MHz)	ATTENUATION FREQUENCY (MHz)			PASS BAND VSWR (TYP)	PACKAGE	PIN-OUT (See Below)	MODEL
		>50 dB	>30 dB	>20 dB				
12	DC-10.7	21	19	16	1.70:1	124	1	FLH-12
24	DC-21.4	42	37	32	1.70:1	124	1	FLH-24
33	DC-30	58	51	44	1.70:1	124	1	FLH-33
55	DC-50	96	85	74	1.70:1	124	1	FLH-55
66	DC-60	115	102	89	1.70:1	124	1	FLH-66
77	DC-70	135	120	103	1.70:1	124	1	FLH-77
154	DC-140	270	235	208	1.70:1	124	1	FLH-154
220	DC-200	385	340	300	1.70:1	124	1	FLH-220
330	DC-300	575	510	445	1.70:1	124	1	FLH-330
495	DC-450	865	765	665	1.70:1	124	1	FLH-495
660	DC-600	1160	1020	890	1.70:1	124	1	FLH-660
825	DC-750	1445	1360	1275	1.70:1	124	1	FLH-825
965	DC-875	1690	1595	1495	1.70:1	124	1	FLH-965
1100	DC-1000	1925	1815	1700	1.70:1	124	1	FLH-1100

NOTE: All units meet or exceed applicable MIL-F-18327.
For other frequencies and impedances please contact us.
Impedance is 50 Ohms for all models.

PIN-OUT TABLE

INPUT	OUTPUT	CASE GROUND
1	16	All Other

HIGH PASS FILTERS

LEADLESS SURFACE-MOUNT MODELS Low Cost



Fc (MHz) LOSS = 3 dB (Nom)	PASSBAND LOSS < 1 dB (MHz)	ATTENUATION FREQUENCY (MHz)			PASS BAND VSWR (TYP)	PACKAGE	PIN-OUT (See Below)	MODEL
		>35 dB	>23 dB	>20 dB				
10	10.7-50	5	6	7	1.70:1	102S	1	FHS-10
20	21.4-100	10	13	15	1.70:1	102S	1	FHS-20
27	30-150	14	17	20	1.70:1	102S	1	FHS-27
45	50-250	23	29	34	1.70:1	102S	1	FHS-45
55	60-300	28	35	41	1.70:1	102S	1	FHS-55
64	70-300	32	40	48	1.70:1	102S	1	FHS-64
127	140-630	65	80	95	1.70:1	102S	1	FHS-127
182	200-850	90	110	135	1.70:1	102S	1	FHS-182
270	300-1200	135	170	200	1.70:1	102S	1	FHS-270
410	450-1400	205	255	305	1.70:1	102S	1	FHS-410
545	600-1600	225	320	410	1.70:1	102S	1	FHS-545
680	750-1900	340	425	510	1.70:1	102S	1	FHS-680
795	875-2000	400	500	600	1.70:1	102S	1	FHS-795

NOTE: All units meet or exceed applicable MIL-F-18327.
For other frequencies and impedances please contact us.
Impedance is 50 Ohms for all models.

For pin location and package outline drawings, see back pages.

PIN-OUT TABLE

INPUT	OUTPUT	CASE GROUND
1	8	All Other

HIGH PASS FILTERS

8 PIN - RELAY HEADER Low Cost



Fc (MHz) LOSS = 3 dB (Nom)	PASSBAND LOSS < 1 dB (MHz)	ATTENUATION FREQUENCY (MHz)			PASS BAND VSWR (TYP)	PACKAGE	PIN-OUT (See Below)	MODEL
		>35 dB	>23 dB	>20 dB				
10	10.7-50	5	6	7	1.70:1	102	1	FHP-10
20	21.4-100	10	13	15	1.70:1	102	1	FHP-20
27	30-150	14	17	20	1.70:1	102	1	FHP-27
45	50-250	23	29	34	1.70:1	102	1	FHP-45
55	60-300	28	35	41	1.70:1	102	1	FHP-55
64	70-300	32	40	48	1.70:1	102	1	FHP-64
127	140-630	65	80	95	1.70:1	102	1	FHP-127
182	200-850	90	110	135	1.70:1	102	1	FHP-182
270	300-1200	135	170	200	1.70:1	102	1	FHP-270
410	450-1400	205	255	305	1.70:1	102	1	FHP-410
545	600-1600	225	320	410	1.70:1	102	1	FHP-545
680	750-1900	340	425	510	1.70:1	102	1	FHP-680
795	875-2000	400	500	600	1.70:1	102	1	FHP-795

NOTE: All units meet or exceed applicable MIL-F-18327.
For other frequencies and impedances please contact us.
Impedance is 50 Ohms for all models.

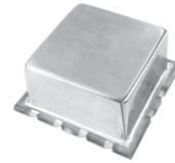
For pin location and package outline drawings, see back pages.

PIN-OUT TABLE

INPUT	OUTPUT	CASE GROUND
1	8	All Other

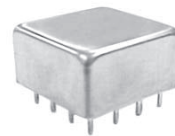
HIGH PASS FILTERS

HIGH SUPPRESSION



LEADLESS SURFACE-MOUNT MODELS

Fc (MHz) LOSS = 3 dB (Nom)	PASSBAND LOSS < 2 dB (MHz)	ATTENUATION FREQUENCY (MHz)			PASS BAND VSWR (TYP)	PACKAGE	PIN-OUT (See Below)	MODEL
		>50 dB	>30 dB	>20 dB				
10	10.7-50	5	6	7	1.70:1	124S	1	FHHS-10
20	21.4-100	10	12	14	1.70:1	124S	1	FHHS-20
27	30-150	14	17	20	1.70:1	124S	1	FHHS-27
45	50-250	23	29	34	1.70:1	124S	1	FHHS-45
55	60-300	28	35	41	1.70:1	124S	1	FHHS-55
64	70-300	32	40	48	1.70:1	124S	1	FHHS-64
127	140-630	65	80	95	1.70:1	124S	1	FHHS-127
182	200-850	90	110	135	1.70:1	124S	1	FHHS-182
270	300-1200	135	170	200	1.70:1	124S	1	FHHS-270
410	450-1400	205	255	305	1.70:1	124S	1	FHHS-410
545	600-1600	225	320	410	1.70:1	124S	1	FHHS-545
680	750-1900	340	425	510	1.70:1	124S	1	FHHS-680
795	875-2000	400	500	600	1.70:1	124S	1	FHHS-795



24 PIN - THROUGH HOLE MOUNT

Fc (MHz) LOSS = 3 dB (Nom)	PASSBAND LOSS < 2 dB (MHz)	ATTENUATION FREQUENCY (MHz)			PASS BAND VSWR (TYP)	PACKAGE	PIN-OUT (See Below)	MODEL
		>50 dB	>30 dB	>20 dB				
10	10.7-50	5	6	7	1.70:1	124	1	FHH-10
20	21.4-100	10	12	14	1.70:1	124	1	FHH-20
27	30-150	14	17	20	1.70:1	124	1	FHH-27
45	50-250	23	29	34	1.70:1	124	1	FHH-45
55	60-300	28	35	41	1.70:1	124	1	FHH-55
64	70-300	32	40	48	1.70:1	124	1	FHH-64
127	140-630	65	80	95	1.70:1	124	1	FHH-127
182	200-850	90	110	135	1.70:1	124	1	FHH-182
270	300-1200	135	170	200	1.70:1	124	1	FHH-270
410	450-1400	205	255	305	1.70:1	124	1	FHH-410
545	600-1600	225	320	410	1.70:1	124	1	FHH-545
680	750-1900	340	425	510	1.70:1	124	1	FHH-680
795	875-2000	400	500	600	1.70:1	124	1	FHH-795

NOTE: All units meet or exceed applicable MIL-F-18327.
For other frequencies and impedances please contact us.
Impedance is 50 Ohms for all models.

For pin location and package outline drawings, see back pages.

PIN-OUT TABLE

INPUT	OUTPUT	CASE GROUND
1	16	All Other

BAND PASS FILTERS

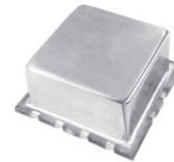
24 PIN - THROUGH HOLE MOUNT HIGH SUPPRESSION



Fc (MHz)	Insertion Loss(dB) (Max)	1 dB Ripple BW (MHz)	20 dB BW (MHz)	40 dB BW (MHz) (50 dB on low end)	PACKAGE	PIN-OUT (See Below)	MODEL
10.7	3.5	0.3	9.63-11.8	8.5-12.85	124	1	FBP-11
21.4	3.5	1.0	19.26-23.6	17-25.70	124	1	FBP-21
30.0	3.5	1.5	27-33	24-36	124	1	FBP-30
45.0	3.5	2.2	40-50	35-56	124	1	FBP-45
50.0	4.0	2.5	45-56	40-62	124	1	FBP-50
60.0	4.0	3.0	54-67	48-74	124	1	FBP-60
70.0	4.6	3.5	63-77	56-86	124	1	FBP-70
140	5.0	8.0	125-160	110-175	124	1	FBP-140
200	6.0	12.0	180-230	155-250	124	1	FBP-200

NOTE: All units meet or exceed applicable MIL-F-18327.
For other frequencies, please contact Synergy directly.

LEADLESS SURFACE-MOUNT MODELS HIGH SUPPRESSION



Fc (MHz)	Insertion Loss(dB) (Max)	1 dB Ripple BW (MHz)	20 dB BW (MHz)	40 dB BW (MHz) (50 dB on low end)	PACKAGE	PIN-OUT (See Below)	MODEL
10.7	3.5	0.3	9.63-11.8	8.5-12.85	124S	1	FBS-11
21.4	3.5	1.0	19.26-23.6	17-25.70	124S	1	FBS-21
30.0	3.5	1.5	27-33	24-36	124S	1	FBS-30
45.0	3.5	2.2	40-50	35-56	124S	1	FBS-45
50.0	4.0	2.5	45-56	40-62	124S	1	FBS-50
60.0	4.0	3.0	54-67	48-74	124S	1	FBS-60
70.0	4.6	3.5	63-77	56-86	124S	1	FBS-70
140	5.0	8.0	125-160	110-175	124S	1	FBS-140
200	6.0	12.0	180-230	155-250	124S	1	FBS-200

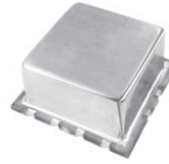
NOTE: All units meet or exceed applicable MIL-F-18327.
For other frequencies and impedances please contact us.
Impedance is 50 Ohms for all models.

For pin location and package outline drawings, see back pages.

PIN-OUT TABLE

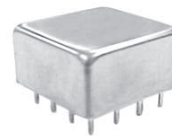
INPUT	OUTPUT	CASE GROUND
1	16	All Other

BAND PASS FILTERS



LEADLESS SURFACE-MOUNT MODELS

CENTER FREQUENCY (MHz)	INSERTION LOSS (dB) Max	PASSBAND (MHz)	35 dB BANDWIDTH (MHz)	VSWR	PACKAGE	PIN-OUT (See Below)	MODEL
10.7	1.7	10.2 - 11.2	5.1 - 22.5	1.5:1	124S	1	FNS-10.7
21.4	1.7	20.3 - 22.5	10.2 - 45.0	1.5:1	124S	1	FNS-21.4
30.0	1.7	28.5 - 31.5	14.3 - 63.0	1.5:1	124S	1	FNS-30
45.0	1.7	42.8 - 47.3	21.3 - 94.5	1.5:1	124S	1	FNS-45
50.0	1.7	47.5 - 52.5	23.8 - 105	1.5:1	124S	1	FNS-50
60.0	1.7	57.0 - 63.0	28.4 - 126	1.5:1	124S	1	FNS-60
70.0	1.7	66.5 - 73.5	33.3 - 147	1.5:1	124S	1	FNS-70
100	2.7	95.0 - 105	47.5 - 210	1.5:1	124S	1	FNS-100
120	2.7	114 - 126	57.0 - 252	1.5:1	124S	1	FNS-120
140	2.7	133 - 147	66.5 - 294	1.5:1	124S	1	FNS-140
160	2.7	152 - 168	76.0 - 336	1.5:1	124S	1	FNS-160
180	2.7	171 - 189	85.5 - 378	1.5:1	124S	1	FNS-180
200	2.7	190 - 210	95 - 420	1.5:1	124S	1	FNS-200
250	3.0	238 - 262.5	119 - 525	1.5:1	124S	1	FNS-250
300	3.0	285.7 - 315	142.8 - 630	1.5:1	124S	1	FNS-300
350	3.0	333.3 - 367.5	166.7 - 735	1.5:1	124S	1	FNS-350
400	3.0	380.9 - 420	190.5 - 840	1.5:1	124S	1	FNS-400
450	3.0	428.6 - 472.5	214.3 - 945	1.5:1	124S	1	FNS-450
500	3.0	476.2 - 525	238.1 - 1050	1.5:1	124S	1	FNS-500



24 PIN - THROUGH HOLE MOUNT

CENTER FREQUENCY (MHz)	INSERTION LOSS (dB) Max	PASSBAND (MHz)	35 dB BANDWIDTH (MHz)	VSWR	PACKAGE	PIN-OUT (See Below)	MODEL
10.7	1.7	10.2 - 11.2	5.1 - 22.5	1.5:1	124	1	FNP-10.7
21.4	1.7	20.3 - 22.5	10.2 - 45.0	1.5:1	124	1	FNP-21.4
30.0	1.7	28.5 - 31.5	14.3 - 63.0	1.5:1	124	1	FNP-30
45.0	1.7	42.8 - 47.3	21.3 - 94.5	1.5:1	124	1	FNP-45
50.0	1.7	47.5 - 52.5	23.8 - 105	1.5:1	124	1	FNP-50
60.0	1.7	57.0 - 63.0	28.4 - 126	1.5:1	124	1	FNP-60
70.0	1.7	66.5 - 73.5	33.3 - 147	1.5:1	124	1	FNP-70
100	2.7	95.0 - 105	47.5 - 210	1.5:1	124	1	FNP-100
120	2.7	114 - 126	57.0 - 252	1.5:1	124	1	FNP-120
140	2.7	133 - 147	66.5 - 294	1.5:1	124	1	FNP-140
160	2.7	152 - 168	76.0 - 336	1.5:1	124	1	FNP-160
180	2.7	171 - 189	85.5 - 378	1.5:1	124	1	FNP-180
200	2.7	190 - 210	95 - 420	1.5:1	124	1	FNP-200

NOTE: All units meet or exceed applicable MIL-F-18327.
For other frequencies and impedances please contact us.
Impedance is 50 Ohms for all models.

For pin location and package outline drawings, see back pages.

PIN-OUT TABLE

INPUT	OUTPUT	CASE GROUND
1	16	All Other



BAND PASS FILTERS



LEADLESS SURFACE-MOUNT MODELS

CENTER FREQUENCY (MHz)	INSERTION LOSS (dB) Max	PASSBAND (MHz)	20 dB BANDWIDTH (MHz)	40 dB BANDWIDTH (MHz)	PACKAGE	PIN-OUT (See Below)	MODEL
10.7	1.5	9.80 - 11.6	7.49 - 13.9	3.40 - 32.1	102S	1	FIS-10.7
21.4	1.5	19.6 - 23.2	14.9 - 27.8	6.80 - 64.2	102S	1	FIS-21.4
30.0	1.5	27.5 - 32.5	21.0 - 39.0	9.30 - 90.0	102S	1	FIS-30
45.0	1.5	41.2 - 48.8	31.5 - 58.5	13.0 - 135	102S	1	FIS-45
50.0	1.5	45.8 - 54.3	35.0 - 65.0	15.8 - 150	102S	1	FIS-50
60.0	1.5	54.9 - 65.1	42.0 - 78.0	19.0 - 180	102S	1	FIS-60
70.0	1.5	64.0 - 75.9	49.0 - 91.0	20.3 - 210	102S	1	FIS-70
100	1.5	91.5 - 108.5	70.0 - 130	30.3 - 300	102S	1	FIS-100
120	1.5	109.8 - 130.2	84.0 - 156	36.0 - 360	102S	1	FIS-120
140	1.5	128.1 - 151.9	98.0 - 182	42.7 - 420	102S	1	FIS-140



8 PIN - RELAY HEADER

CENTER FREQUENCY (MHz)	INSERTION LOSS (dB) Max	PASSBAND (MHz)	20 dB BANDWIDTH (MHz)	40 dB BANDWIDTH (MHz)	PACKAGE	PIN-OUT (See Below)	MODEL
10.7	1.5	9.80 - 11.6	7.49 - 13.9	3.40 - 32.1	102	1	FIP-10.7
21.4	1.5	19.6 - 23.2	14.9 - 27.8	6.80 - 64.2	102	1	FIP-21.4
30.0	1.5	27.5 - 32.5	21.0 - 39.0	9.30 - 90.0	102	1	FIP-30
45.0	1.5	41.2 - 48.8	31.5 - 58.5	13.0 - 135	102	1	FIP-45
50.0	1.5	45.8 - 54.3	35.0 - 65.0	15.8 - 150	102	1	FIP-50
60.0	1.5	54.9 - 65.1	42.0 - 78.0	19.0 - 180	102	1	FIP-60
70.0	1.5	64.0 - 75.9	49.0 - 91.0	20.3 - 210	102	1	FIP-70
100	1.5	91.5 - 108.5	70.0 - 130	30.3 - 300	102	1	FIP-100
120	1.5	109.8 - 130.2	84.0 - 156	36.0 - 360	102	1	FIP-120
140	1.5	128.1 - 151.9	98.0 - 182	42.7 - 420	102	1	FIP-140

NOTE: All units meet or exceed applicable MIL-F-18327.
For other frequencies and impedances please contact us.
Impedance is 50 Ohms for all models.

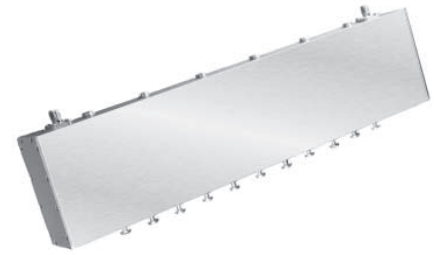
For pin location and package outline drawings, see back pages.

PIN-OUT TABLE

INPUT	OUTPUT	CASE GROUND
1	8	All Other

CAVITY FILTERS

ESMR RECEIVE BANDPASS FILTER



FREQUENCY RANGE (MHz)	INSERTION LOSS (dB) TYP/MAX	PASSBAND RETURN LOSS (dB) MIN	PASSBAND RIPPLE (dB) P-P MAX	STOPBAND REJECTION DC-780 MHz 847-2000 MHz (dB) MIN		PACKAGE	MODEL
806-821	1.0/1.2	20	0.25	70	70	236	DBSF813.5/15/6
IMPEDANCE (OHMS)	OPERATING TEMPERATURE RANGE (°C)	POWER HANDLING (WATTS) MAX	WEIGHT (LB)	CONNECTOR			
50	-20 to +70	100	1.6	SMA Female			



EGSM FULLBAND DUPLEXER

FREQUENCY RANGE (MHz) RX TX		INSERTION LOSS (dB) TYP/MAX	PASSBAND RETURN LOSS (dB) MIN	PASSBAND RIPPLE (dB) P-P MAX	ANTENNA TO RX REJECTION DC-845 MHz 925-2000 MHz (dB) MIN		ANTENNA TO TX REJECTION DC-915 MHz 995-2000 MHz (dB) MIN		RX TO TX ISOLATION (dB) MIN
880-915	925-960	0.95/1.2	20	0.25	85	40	40	85	40
IMPEDANCE (OHMS)	OPERATING TEMPERATURE RANGE (°C)	POWER HANDLING (WATTS) MAX	WEIGHT (LB)	CONNECTOR	PACKAGE	MODEL			
50	-20 to +70	50	2.4	SMA Female	237	DXSF897.5/942.5/35/9			



PCS FULLBAND DUPLEXER

FREQUENCY RANGE (MHz) RX TX		INSERTION LOSS (dB) TYP/MAX	PASSBAND RETURN LOSS (dB) MIN	PASSBAND RIPPLE (dB) P-P MAX	ANTENNA TO RX REJECTION DC-1770 MHz 1930-5000 MHz (dB) MIN		ANTENNA TO TX REJECTION DC-1910 MHz 2050-5000 MHz (dB) MIN		RX TO TX ISOLATION (dB) MIN
1850-1910	1930-1990	1.4/1.6	18	0.20	62	58	58	62	60
IMPEDANCE (OHMS)	OPERATING TEMPERATURE RANGE (°C)	POWER HANDLING (WATTS) MAX	WEIGHT (LB)	CONNECTOR	PACKAGE	MODEL			
50	-20 to +70	50	1.0	SMA Female	238	DXSF1880/1960/60/8			

