

QUADRATURE HYBRID MODEL DQS-10-50

5:1 BANDWIDTH

10 - 50 MHz

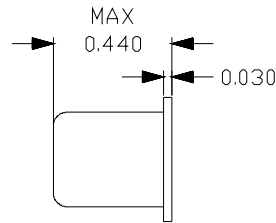
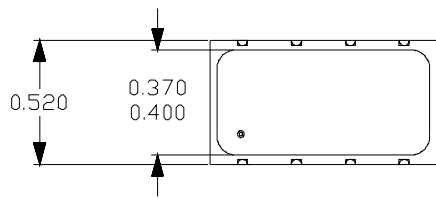
SPECIFICATIONS

Operating Frequency:	10 - 50 MHz	Isolation:	30 dB (Typ) / 20 dB (Min)
*Insertion Loss:	1.0 dB (Max)	VSWR:	1.5:1 (Max)
Amplitude Unbalance:	0.8 dB (Max)	Impedance:	50 Ohms
Phase Unbalance:	3.0° (Max)	Operating Temp. Range:	-20° to +70°C

**Below theoretical -3.0 dB coupling split loss.*



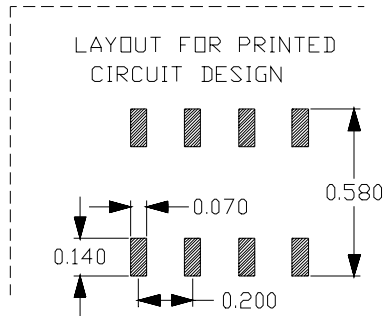
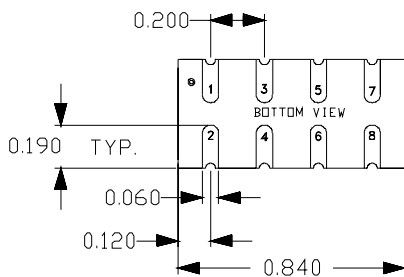
MECHANICAL OUTLINE: 102S



PIN-OUT

INPUT	PIN 1
+90° OUTPUT	PIN 8
0° OUTPUT	PIN 7
ISOLATED*	PIN 2

* Terminate ISOLATED port with 50 ohms.



QUADRATURE HYBRID MODEL DQS-10-50

5:1 BANDWIDTH

10 - 50 MHz

PERFORMANCE PLOTS

