

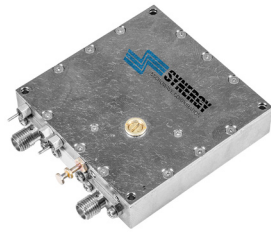
PHASE LOCKED DRO OSCILLATOR

CONNECTORIZED MODEL: KSFL0D1280-12-1280

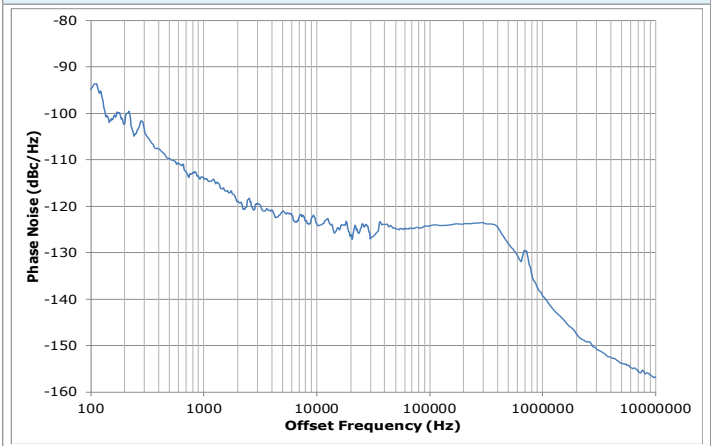
12.8 GHz

FEATURES:

- ▶ Exceptional Phase Noise
- ▶ Ku Band Source
- ▶ Internal Regulation
- ▶ Small Packages



Phase Noise

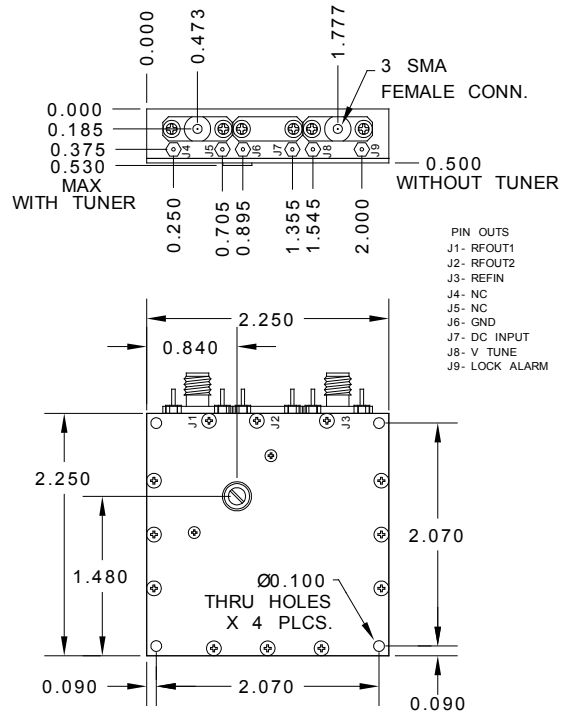


SPECIFICATION

Frequency (Fo)	12.8 GHz	
Output Power	≥ +10 dBm	
Reference Input Frequency	1280 MHz	
Reference Input Level	+9 to +13 dBm	
Supply Voltage	Vcc (Vdc)	Icc (mA Max.)
	+12	500
Harmonics (2 *Fo)	27 dB (Min.)	
Sub-Harmonic (3 *Fo)	37 dB (Min.)	
Output Spurious	75 dB (Min.)	
Reference Sideband ¹	70 dB (Min.)	
Output Load Impedance	50 Ohms (Nom.)	
Typical Phase Noise	Offset	Phase Noise
	@ 1 kHz	-114 dBc/Hz
	@ 10 kHz	-122 dBc/Hz
	@ 100 kHz	-123 dBc/Hz
	@ 1 MHz	-138 dBc/Hz
	@ 10 MHz	-158 dBc/Hz
Lock Detect Indicator	CMOS High (Lock), CMOS Low (Lock)	
Operating Temperature Range	-20 to +50 °C	
Storage Temperature Range	-40 to +85 °C	

¹ Reference sidebands are measured at 12.8 GHz ±1.28 GHz.

Package # 405-1

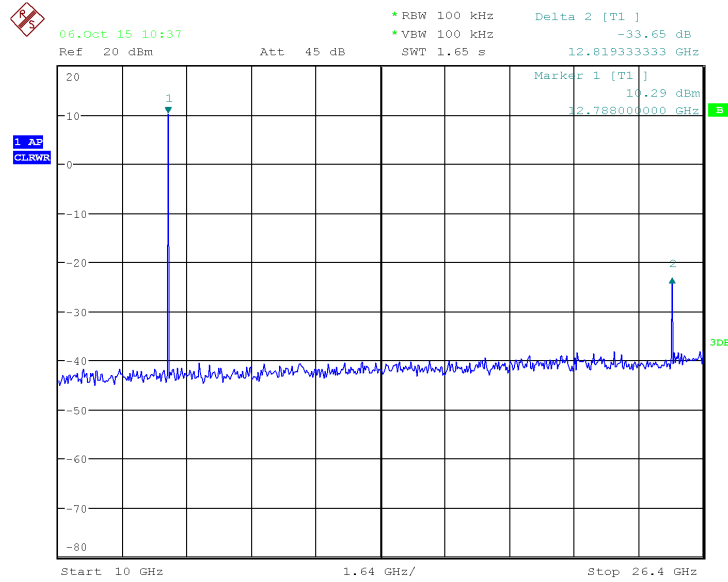


PHASE LOCKED DRO OSCILLATOR

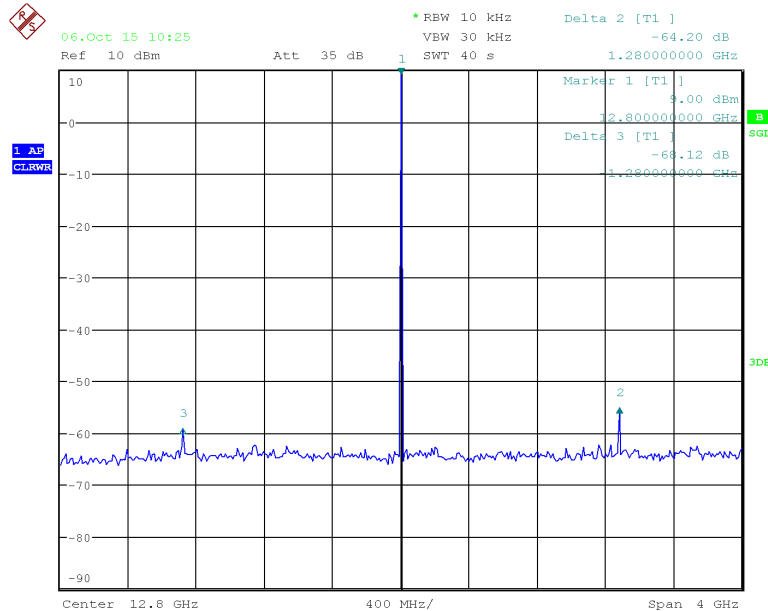
CONNECTORIZED MODEL: KSFL0D1280-12-1280

12.8 GHz

HARMONIC SUPPRESSION



REFERENCE SIDEBAND SUPPRESSION



PERFORMANCE PLOTS