

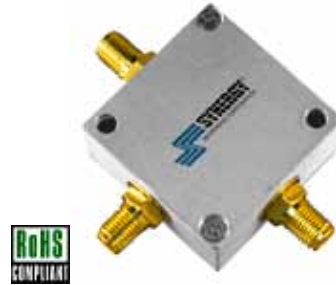
# PHASE SHIFTER

## CONNECTORIZED MODEL: PK-711S

**4.75 - 5.25 MHz**

**FEATURES:**

- ▶ Excellent Performance
- ▶ Low VSWR
- ▶ High Efficiency

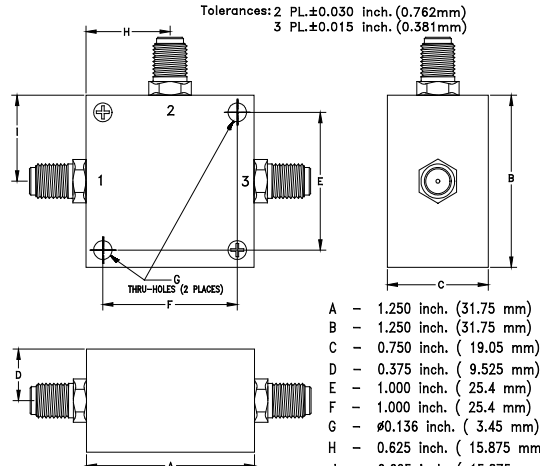


**SPECIFICATIONS (Rev. B 1/3/11)**

Frequency	4.75 - 5.25 MHz	
Insertion Loss (dB)	Typ.	Max.
	1.2	2.0
Control Bandwidth	DC - 50 kHz (Min.)	
Control Voltage	0 - 30 VDC	
Phase Shift	180° (Min.)	
VSWR	1.5:1 (Max.)	
Input Power	-10 dBm (Max.)	
Impedance	50 Ohms (Nom.)	
Operating Temperature Range	-55 to +100 °C	

<b>Package #</b>	<b>110LF</b>
------------------	--------------

All Dimensions in inches (mm)  
Tolerances: 2 PL.±0.030 inch. (0.762mm)  
3 PL.±0.015 inch. (0.381mm)



A - 1.250 inch. (31.75 mm)

B - 1.250 inch. (31.75 mm)

C - 0.750 inch. ( 19.05 mm)

D - 0.375 inch. ( 9.525 mm)

E - 1.000 inch. ( 25.4 mm)

F - 1.000 inch. ( 25.4 mm)

G - ∅0.136 inch. ( 3.45 mm)

H - 0.625 inch. ( 15.875 mm)

I - 0.625 inch. ( 15.875 mm)

PORT CONFIGURATION		
Input	Output	Control
1	3	2

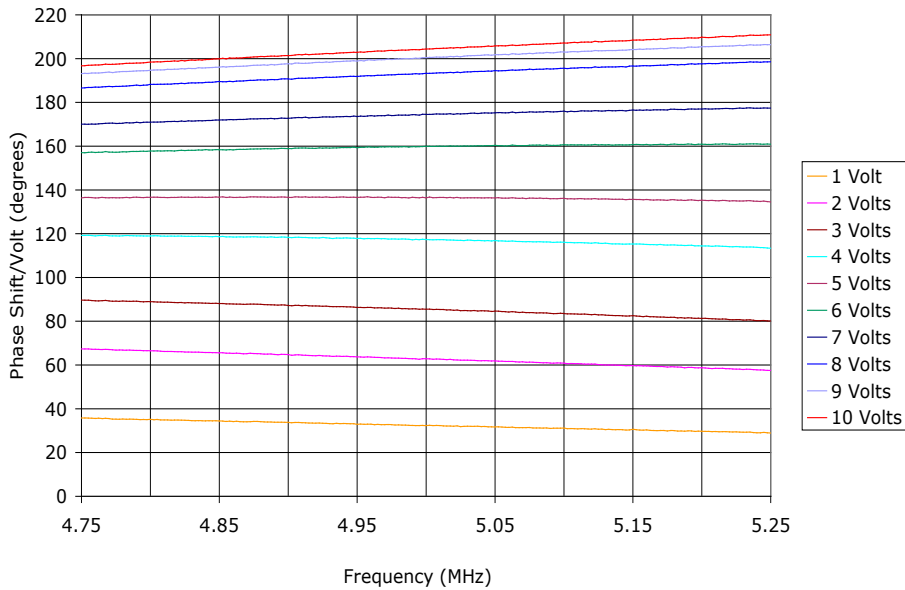
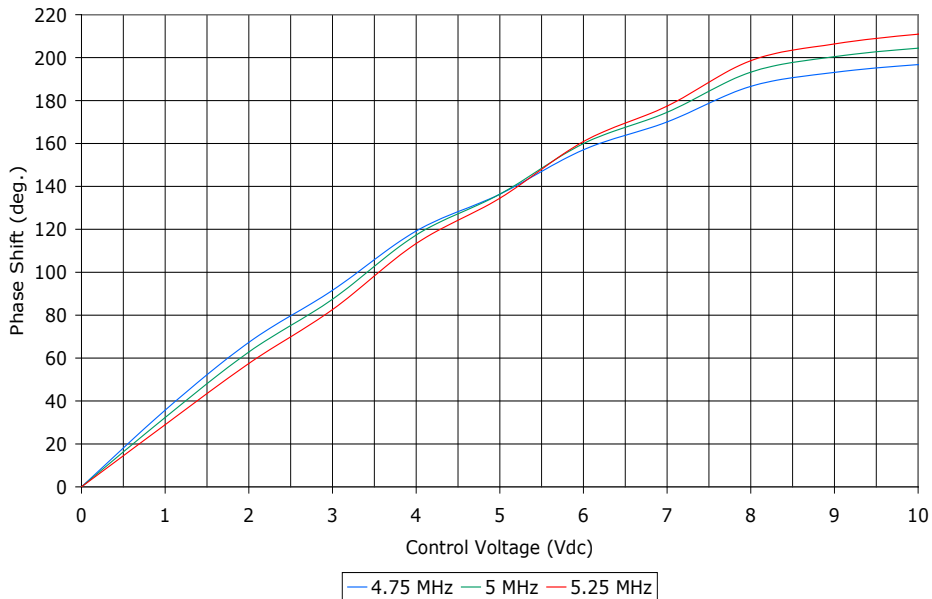
*Note:*  
For other connector styles, replace part number suffix "S" with, "B" for BNC or "N" for Type N connector type. All connectors are female unless noted otherwise.

# PHASE SHIFTER

## CONNECTORIZED MODEL: PK-711S

4.75 - 5.25 MHz

PERFORMANCE PLOTS



# PHASE SHIFTER

## CONNECTORIZED MODEL: PK-711S

4.75 - 5.25 MHz

PERFORMANCE PLOTS

