

# 16-WAY RESISTIVE SPLITTER

## CONNECTORIZED MODEL: DPK01000S

**WIDE BANDWIDTH**

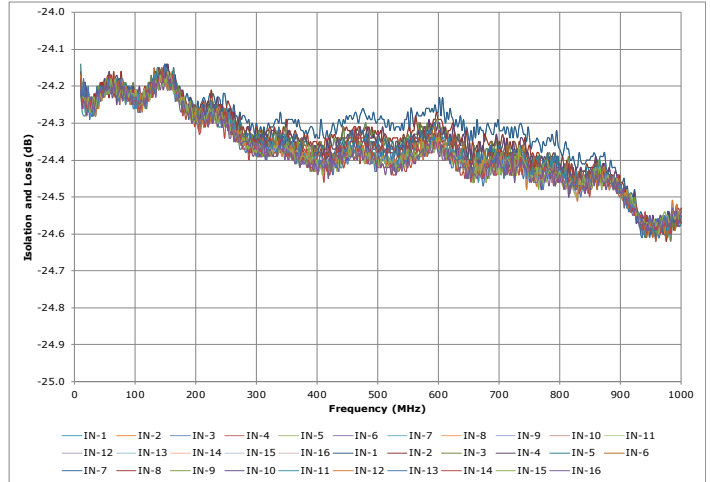
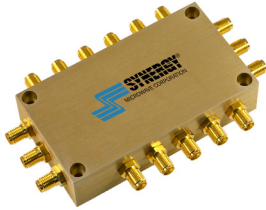
**DC - 1000 MHz**

**FEATURES:**

- ▶ Excellent Performance
- ▶ Wide Bandwidth
- ▶ Lead Free RoHS Compliant

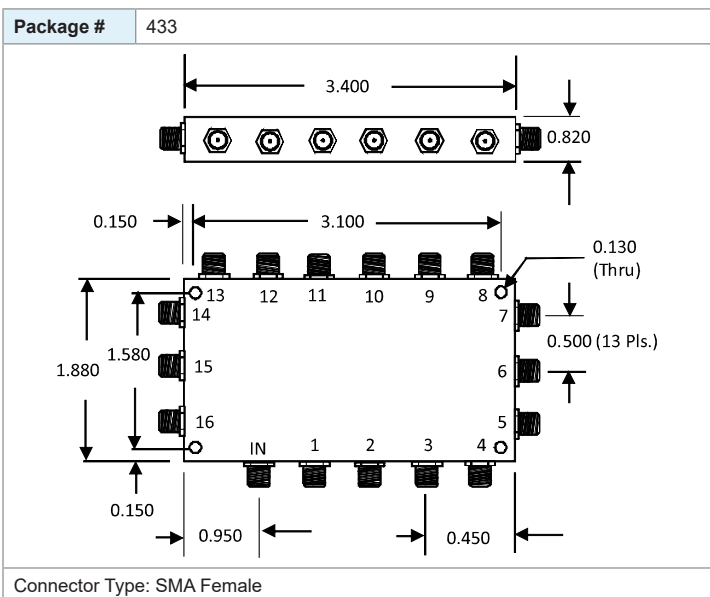
**APPLICATIONS:**

- ▶ Signal Splitting & Low Power Combining



**SPECIFICATIONS**

Frequency	DC - 1000 MHz	
Insertion Loss (dB) *	Typ.	Max.
	0.35	0.7
Phase Unbalance(Deg.)	Typ.	Max.
	2.5	4
Amplitude Unbalance (dB)	Typ.	Max.
	0.2	0.3
Isolation (dB)	24.08 (Typ.)	
Input Power	2 Watt (Max.)	
VSWR	1.10:1 (Max.)	
Impedance	50 Ohms (Nom.)	
Operating Temperature Range	-55 to +85 °C	



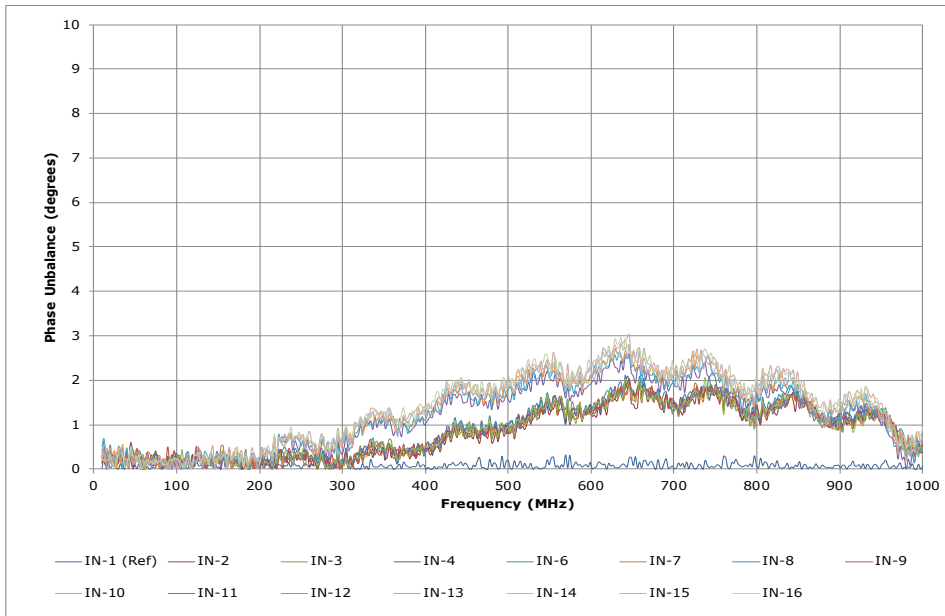
# 16-WAY RESISTIVE SPLITTER

## CONNECTORIZED MODEL: DPK01000S

WIDE BANDWIDTH

DC - 1000 MHz

DATA @ 25°C



PERFORMANCE PLOTS