

2-WAY POWER DIVIDER

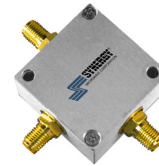
CONNECTORIZED MODEL: DSK-7M2S

WIDE BANDWIDTH

2 - 350 MHz

FEATURES:

- ▶ Excellent Performance
- ▶ Wide Bandwidth
- ▶ Small Size, Surface Mount
- ▶ Moderate Power
- ▶ Applications: Signal Splitting & Low Power Combining



SPECIFICATIONS (Rev. C 09/27/17)

Frequency	2 - 350 MHz		
Insertion Loss	Freq. (MHz)	dB (Typ.)	dB (Max.)
	2-20	0.2	0.5
	20-175	0.3	0.6
	175-350	0.5	0.8
Isolation	Freq. (MHz)	dB (Typ.)	dB (Min.)
	2-20	35	30
	20-175	32	26
	175-350	35	26
Phase Unbalance	Freq. (MHz)	Degrees (Max.)	
	2-20	2	
	20-175	2	
	175-350	2	
Amplitude Unbalance	0.2 dB (Max.)		
Input Power Rating	1 Watt (Max.)		
VSWR	1.18:1 (Typ.)		
Output Impedance	50 Ohms (Nom.)		
Operating Temperature Range	-55 to +100 °C		

Package # 110LF

All Dimensions in inches (mm)

Tolerances: 2 PL. ±0.030 inch. (0.762mm)
3 PL. ±0.015 inch. (0.381mm)

A - 1.250 inch. (31.75 mm)

B - 1.250 inch. (31.75 mm)

C - 0.750 inch. (19.05 mm)

D - 0.375 inch. (9.525 mm)

E - 1.000 inch. (25.4 mm)

F - 1.000 inch. (25.4 mm)

G - ∅0.136 inch. (3.45 mm)

H - 0.625 inch. (15.875 mm)

I - 0.625 inch. (15.875 mm)

PORT CONFIGURATION	
Input	Output
2	1,3

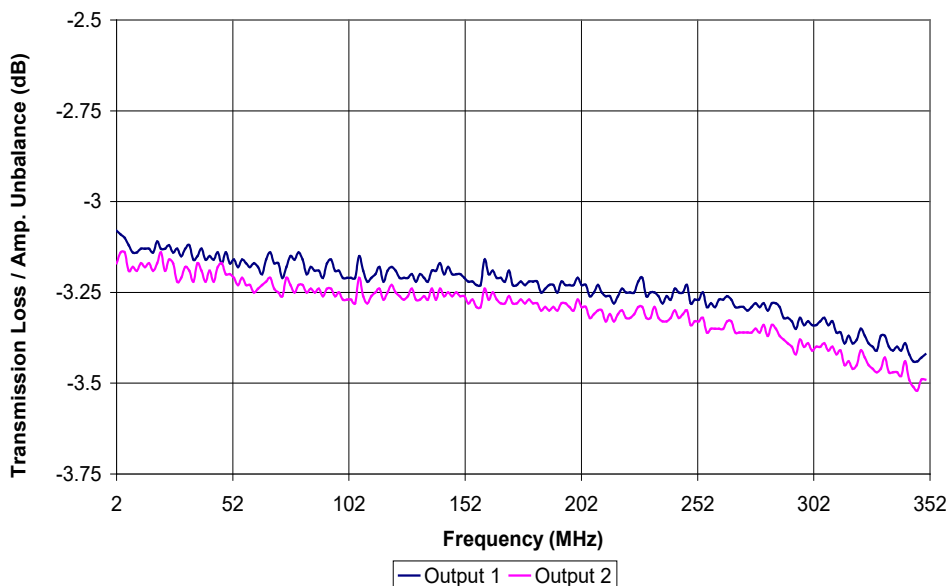
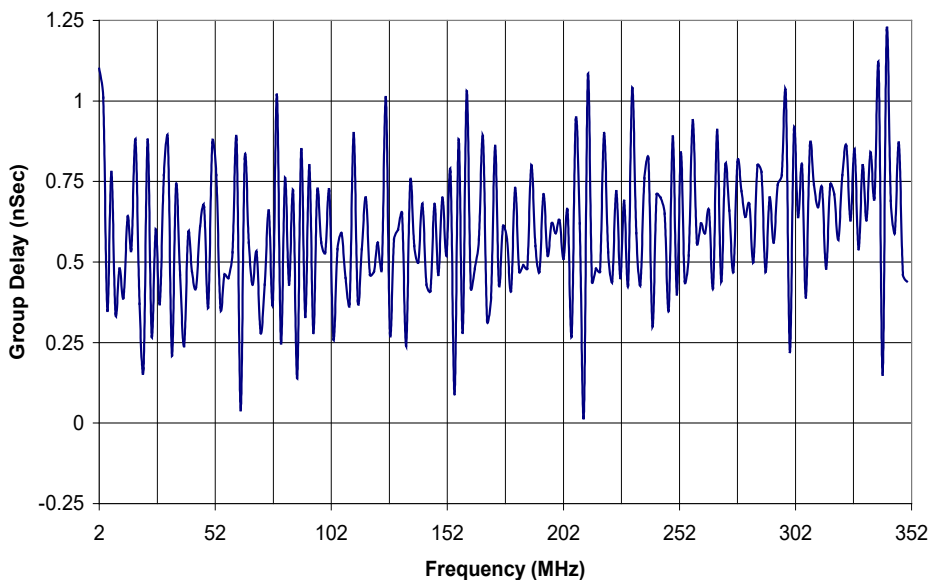
2-WAY POWER DIVIDER

CONNECTORIZED MODEL: DSK-7M2S

WIDE BANDWIDTH

2 - 350 MHz

PERFORMANCE PLOTS



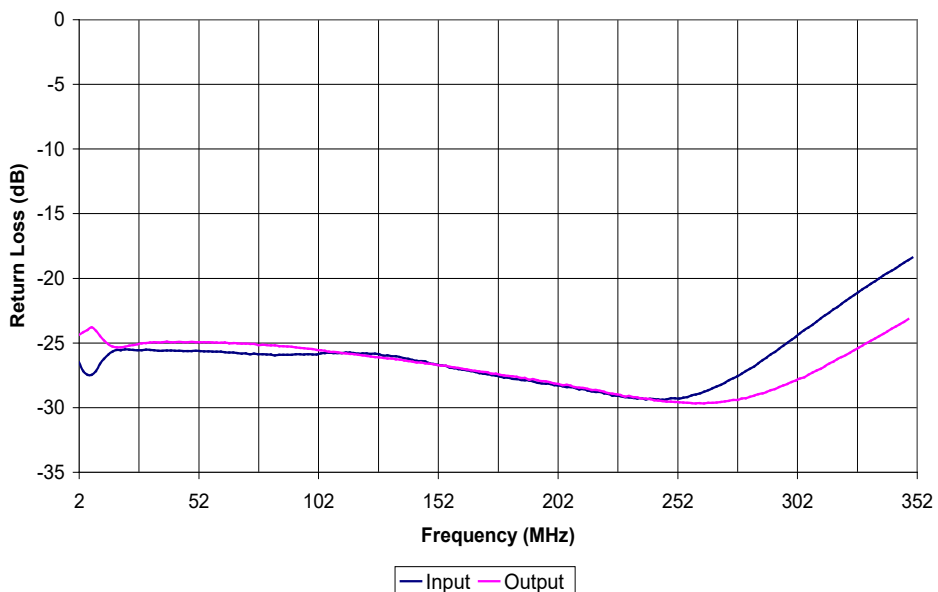
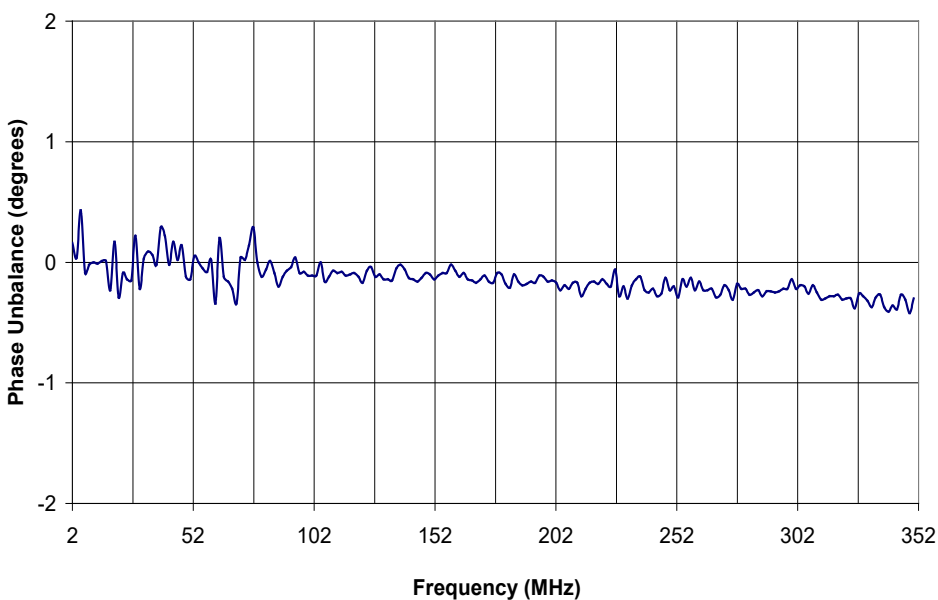
2-WAY POWER DIVIDER

CONNECTORIZED MODEL: DSK-7M2S

WIDE BANDWIDTH

2 - 350 MHz

PERFORMANCE PLOTS

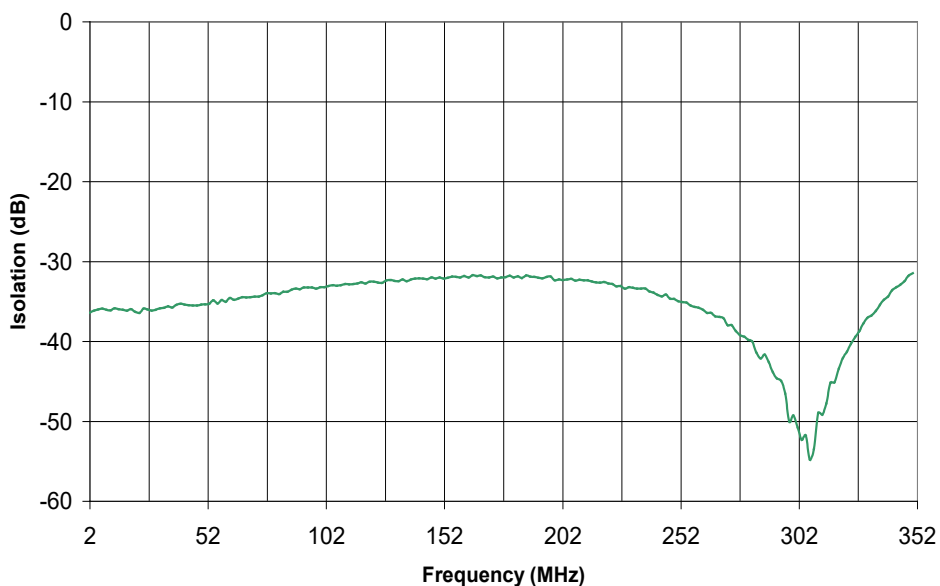


2-WAY POWER DIVIDER

CONNECTORIZED MODEL: DSK-7M2S

WIDE BANDWIDTH

2 - 350 MHz



PERFORMANCE PLOTS