

5-WAY POWER DIVIDER

SURFACE MOUNT MODEL: S5D1424

OPTIMIZED BANDWIDTH

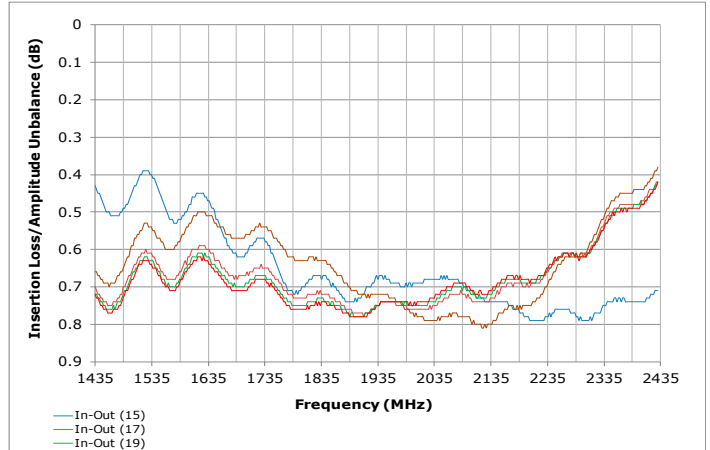
1435 - 2395 MHz

FEATURES:

- ▶ Low Loss
- ▶ Optimum Performance

APPLICATIONS:

- ▶ Signal Splitting & Low Power Combining



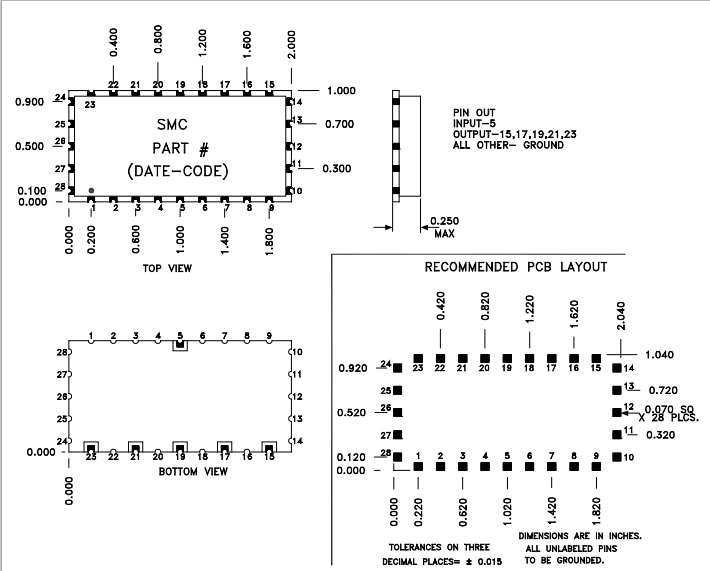
SPECIFICATIONS

Frequency	1435 - 2395 MHz	
Insertion Loss (dB) ¹	Typ.	Max.
	0.5	1.0
Isolation (dB)	Typ.	Min.
	20	15
Phase Unbalance (Deg.)	Typ.	Max.
	2.0°	5.0°
Amplitude Unbalance (dB)	Typ.	Max.
	0.2	0.5
VSWR	Typ.	Max.
	1.30:1	1.40:1
Input Power ²	1 Watt (Max.)	
Impedance	50 Ohms (Nom.)	
Operating Temperature Range	-40 to +70 °C	

¹ Above 7.0 dB theoretical split loss

² Handling power applies to splitter mode and assumes ideal 50 Ohms impedance matching for all ports.

Package # 384



Port Configuration		
Input	Output	Ground
5	15,17,19,21,23	All Other

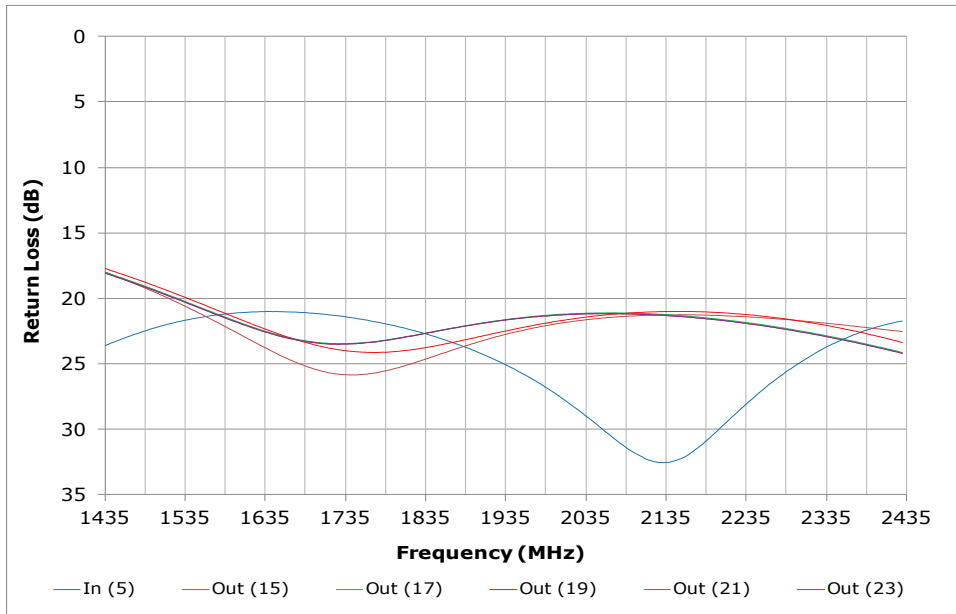
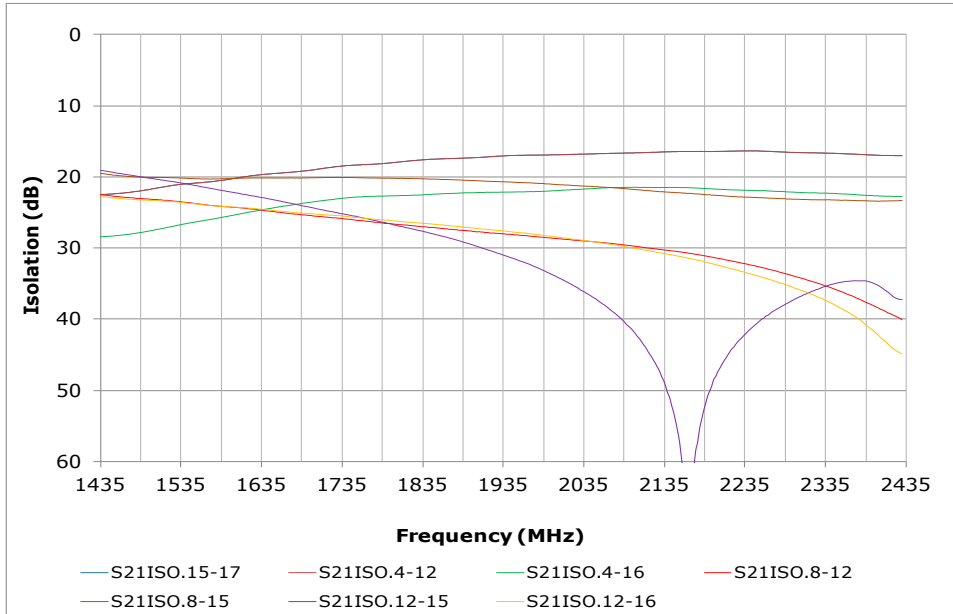
5-WAY POWER DIVIDER

SURFACE MOUNT MODEL: S5D1424

OPTIMIZED BANDWIDTH

1435 - 2395 MHz

PERFORMANCE PLOTS

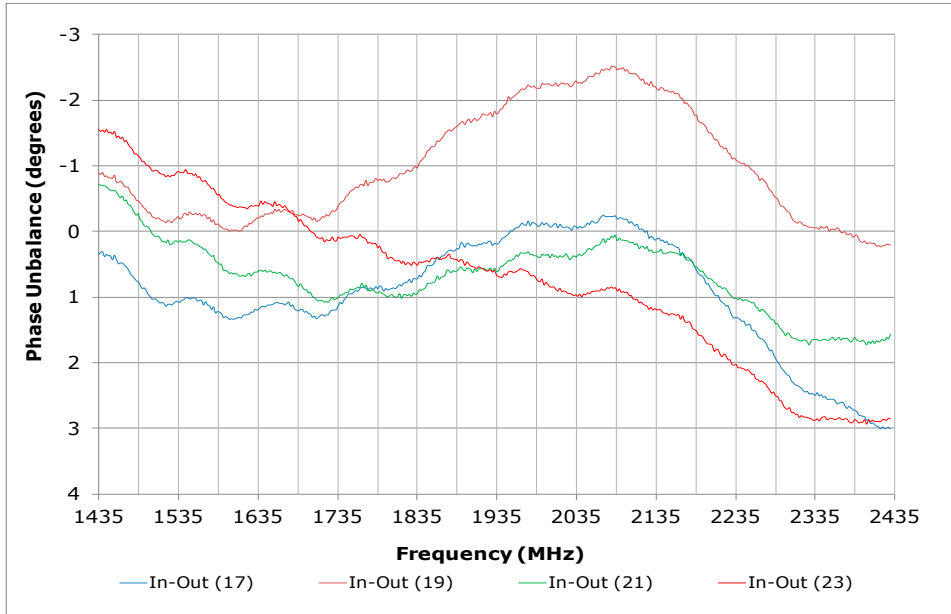


5-WAY POWER DIVIDER

SURFACE MOUNT MODEL: S5D1424

OPTIMIZED BANDWIDTH

1435 - 2395 MHz



PERFORMANCE PLOTS