

# 4-WAY POWER DIVIDER

## SURFACE MOUNT MODEL: SPD-90-210

OPTIMIZED BANDWIDTH

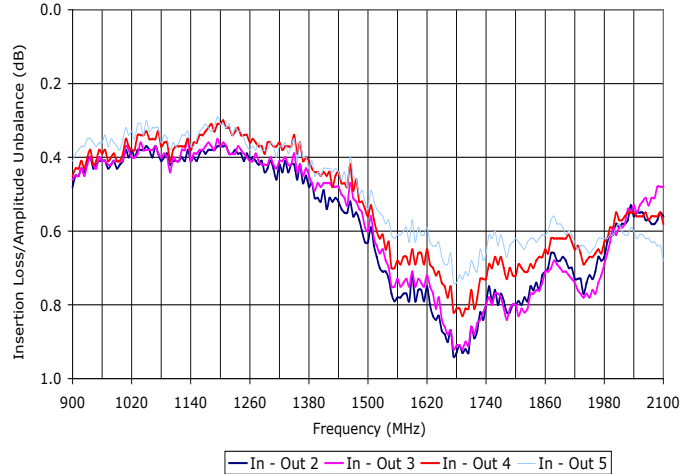
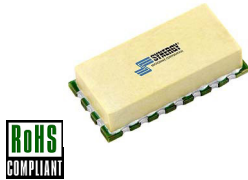
900 - 2100 MHz

**FEATURES:**

- ▶ Excellent Performance
- ▶ Small Size, Surface Mount
- ▶ Moderate Power
- ▶ Lead Free RoHS Compliant

**APPLICATIONS:**

- ▶ Signal Splitting & Low Power Combining

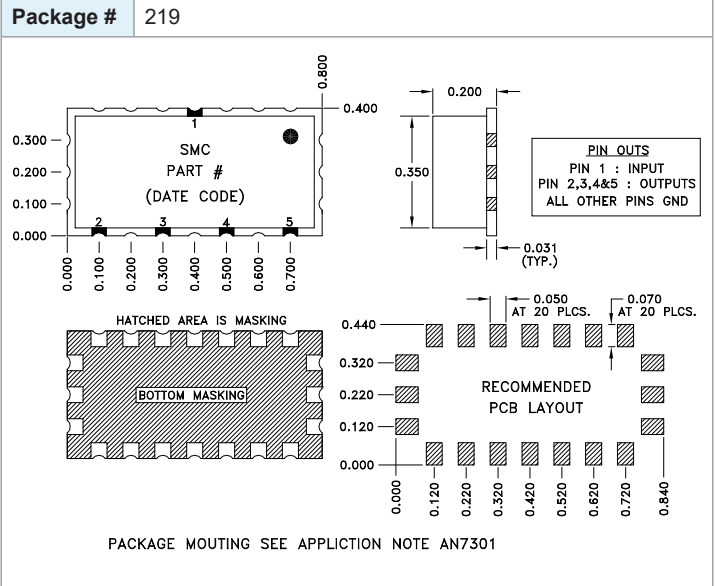


SPECIFICATIONS (Rev. C 08/27/15)

Frequency	900 - 2100 MHz	
Insertion Loss (dB) <sup>1</sup>	Typ.	Max.
	0.9	1.25
Isolation (dB)	Typ.	Min.
	20	15
Phase Unbalance (Deg.)	Typ.	Max.
	3.0°	6.0°
Amplitude Unbalance (dB)	Typ.	Max.
	0.2	0.5
Input Power <sup>2</sup>	1 Watt (Max.)	
Output Impedance	50 Ohms (Nom.)	
Operating Temperature Range	-40 to +85 °C	

<sup>1</sup> Insertion loss above 6.0 dB theoretical split loss.

<sup>2</sup> Handling power applies to splitter mode and assumes ideal 50 Ohms impedance matching on all ports.



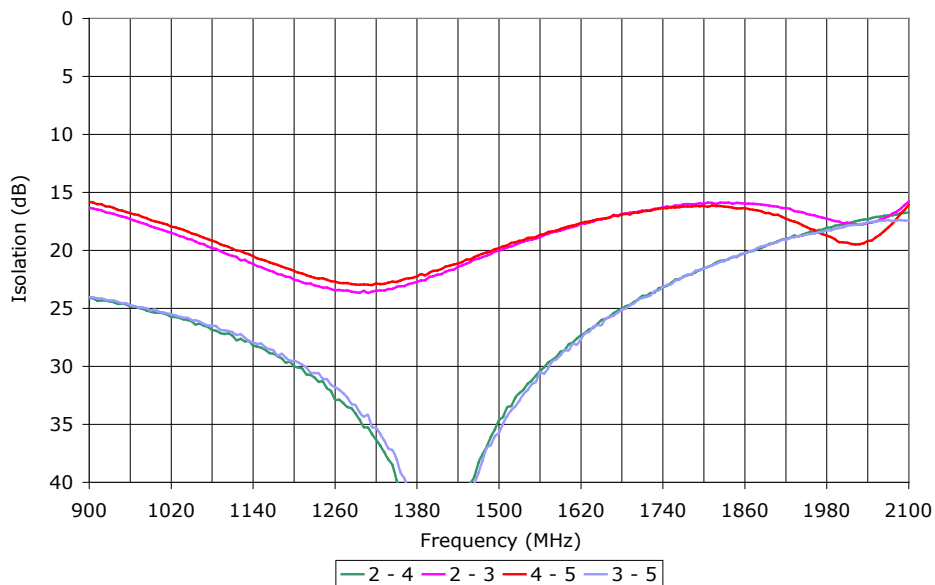
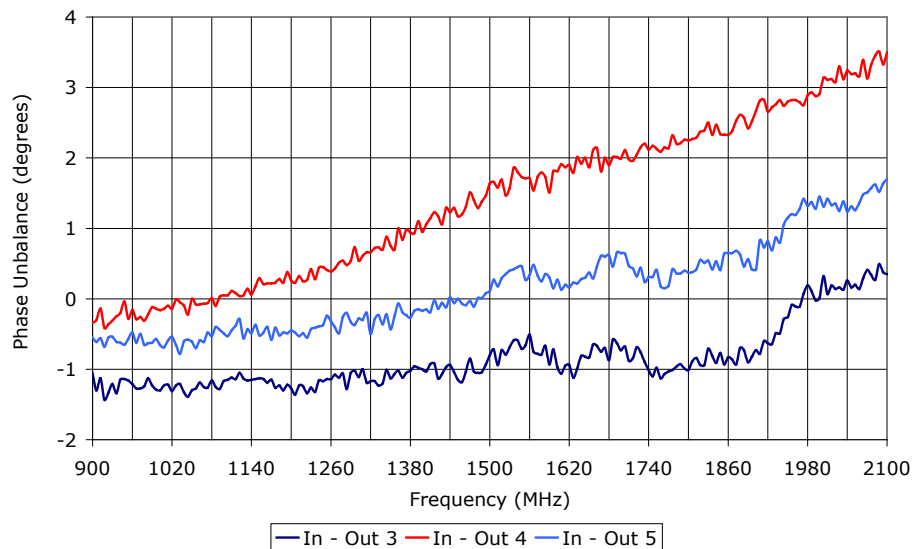
# 4-WAY POWER DIVIDER

## SURFACE MOUNT MODEL: SPD-90-210

OPTIMIZED BANDWIDTH

900 - 2100 MHz

PERFORMANCE PLOTS

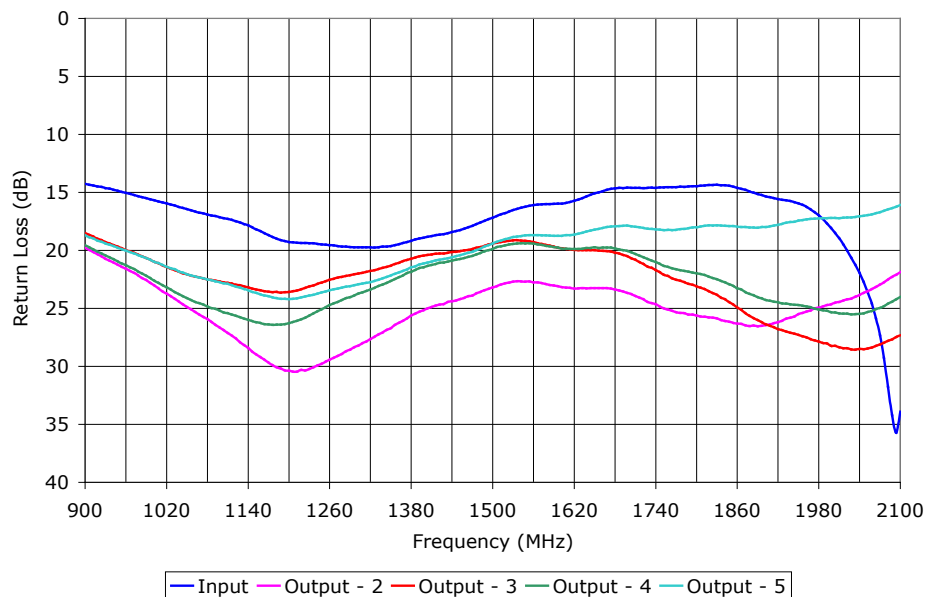


# 4-WAY POWER DIVIDER

## SURFACE MOUNT MODEL: SPD-90-210

OPTIMIZED BANDWIDTH

900 - 2100 MHz



PERFORMANCE PLOTS