

POWER DIVIDERS

0° : 2-WAY

LEADLESS SURFACE-MOUNT



FREQUENCY RANGE (MHz)	ISOLATION (dB)			INSERTION LOSS (dB)			PHASE UNBALANCE (Degrees)			AMPLITUDE UNBALANCE (dB)			PACKAGE	PIN-OUT (See Below)	MODEL
	LB TYP/MIN	MB TYP/MIN	UB TYP/MIN	LB TYP/MAX	MB TYP/MAX	UB TYP/MAX	LB MAX	MB MAX	UB MAX	LB TYP/MAX	MB TYP/MAX	UB TYP/MAX			
0.1 - 100	25/20	25/22	23/20	0.2/0.4	0.25/0.6	0.4/1.0	2.0	2.0	2.0	0.2	0.2	0.2	133	3	SPD-C2
1 - 500	35/25	32/25	30/20	0.3/0.6	0.35/0.7	0.6/1.0	2.0	3.0	4.0	0.2	0.3	0.3	133	3	SPD-C1
2 - 300	25/20	30/20	25/20	0.5/0.9	0.6/0.8	0.8/1.0	3.0	4.0	5.0	0.4	0.5	0.5	134	1	SD-1
5 - 500	25/20	30/20	25/20	0.4/0.7	0.5/0.8	0.6/1.0	3.0	4.0	5.0	0.4	0.4	0.6	134	2	SD-2
10 - 1000	25/20	30/17	25/17	0.5/0.8	0.6/1.0	1.0/1.5	2.0	4.0	7.0	0.4	0.5	0.7	134	2	SD-3
10 - 1000	25/20	30/20	25/17	0.5/0.8	0.6/1.0	1.0/1.5	2.0	4.0	7.0	0.4	0.5	0.7	147	4	SPD-M-3
10 - 1000	22/19	19/17	18/15	0.4/0.8	0.7/1.2	1.2/1.5	2.0	3.0	5.0	0.2	0.3	0.5	133	3	SPD-C5
400 - 2700	-/-	-/-	25/20	-/-	-/-	1.0/1.5	-/-	-/-	6.0	-/-	-/-	0.5	133	3	SPD-C12†
500 - 1500	20/15	20/15	20/15	0.6/0.8	0.7/0.8	0.8/1.0	3.0	4.0	5.0	0.3	0.4	0.5	133	3	SPD-C4
700 - 1000	20/15	20/15	20/15	0.6/0.8	0.6/0.8	0.8/1.0	3.0	4.0	5.0	0.3	0.4	0.5	133	3	SPD-C3

LEADLESS SURFACE-MOUNT



FREQUENCY RANGE (MHz)	ISOLATION (dB)			INSERTION LOSS (dB)			PHASE UNBALANCE (Degrees)			AMPLITUDE UNBALANCE (dB)			PACKAGE	PIN-OUT (See Below)	MODEL
	LB TYP/MIN	MB TYP/MIN	UB TYP/MIN	LB TYP/MAX	MB TYP/MAX	UB TYP/MAX	LB MAX	MB MAX	UB MAX	LB TYP/MAX	MB TYP/MAX	UB TYP/MAX			
850 - 960	-/-	-/-	27/20	-/-	-/-	0.6/1.0	-/-	-/-	5.0	-/-	-/-	0.4	133	3	SPD-C1-2†
1600 - 1700	-/-	-/-	26/21	-/-	-/-	0.8/1.2	-/-	-/-	3.0	-/-	-/-	0.6	133	3	SPD-C7†
1600-1900	-/-	-/-	24/18	-/-	-/-	0.3/0.5	--	--	2.0	--	--	0.2	218	6	SPD-C10†
1725 - 1900	-/-	-/-	25/20	-/-	-/-	0.4/0.6	-/-	-/-	4.0	-/-	-/-	0.4	124S	5	DSS-927†
2000 - 2100	-/-	-/-	26/21	-/-	-/-	0.4/0.6	-/-	-/-	3.0	-/-	-/-	0.6	133	3	SPD-C8†
2000 - 2200	-/-	-/-	25/20	-/-	-/-	0.8/1.2	-/-	-/-	3.0	-/-	-/-	0.6	124S	5	DSS-928†
2200 - 2400	-/-	-/-	25/20	-/-	-/-	0.8/1.2	-/-	-/-	3.0	-/-	-/-	0.6	124S	5	DSS-929†
800 - 1000	-/-	-/-	20/14	-/-	-/-	0.5/0.8	-/-	-/-	5.0	-/-	-/-	0.5	232	6	M2D810†
1800 - 2200	-/-	-/-	20/15	-/-	-/-	0.5/1.0	-/-	-/-	6.0	-/-	-/-	0.7	231	6	M2D1822†
2000 - 2550	-/-	-/-	20/15	-/-	-/-	0.5/1.0	-/-	-/-	6.0	-/-	-/-	0.7	231	6	M2D2025†

Notes:

Power Rating(All Models) = 1 watt, max

† (UB) - Denotes full bandwidth specification

For pin location and package outline drawings, see back pages.

LB	= LF to 10 LF
MB	= 10 LF to HF/2
UB	= HF/2 to HF

PIN-OUT TABLE

	INPUT	OUTPUT	*GROUND
#1	2	4,6	1,3,5
#2	6	3,4	1,2,5
#3	3	1,2	4,5,6
#4	1	2,4	3
#5	1	4,16	All other
#6	1	2,3	All other

*GROUND = Ground externally

POWER DIVIDERS

0° : 2-WAY

LEADED SURFACE-MOUNT



FREQUENCY RANGE (MHz)	ISOLATION (dB)			INSERTION LOSS (dB)			PHASE UNBALANCE (Degrees)			AMPLITUDE UNBALANCE (dB)			PACKAGE	PIN-OUT (See Below)	MODEL
	LB TYP/MIN	MB TYP/MIN	UB TYP/MIN	LB TYP/MAX	MB TYP/MAX	UB TYP/MAX	LB MAX	MB MAX	UB MAX	LB MAX	MB MAX	UB MAX			
2 - 300	25/20	30/20	25/20	0.5/0.9	0.6/0.8	0.8/1.0	3.0	4.0	5.0	0.4	0.5	0.5	159	1	SDL-1
2 - 500	35/18	35/25	27/20	0.3/0.8	0.3/0.6	0.5/1.0	1.0	2.0	3.0	0.15	0.2	0.3	159	2	SDL-173 ■
2 - 1000	35/25	27/17	23/17	0.5/0.6	0.7/0.9	1.2/1.5	1.0	2.0	4.0	0.2	0.3	0.6	159	2	SDL-100
5 - 500	25/20	30/20	25/20	0.4/0.7	0.5/0.8	0.6/1.0	3.0	4.0	5.0	0.4	0.4	0.6	159	2	SDL-2
5 - 750	25/18	30/23	23/17	0.6/1.4	0.8/1.6	1.5/1.8	1.0	3.0	5.0	0.2	0.3	0.5	159	2	SDL-174 ■
5 - 500	25/20	30/20	25/20	0.4/0.7	0.5/0.8	0.6/1.0	3.0	4.0	5.0	0.4	0.4	0.6	134J	2	SDZ-2
10 - 1000	25/20	30/17	25/17	0.5/0.8	0.6/1.0	1.0/1.5	2.0	4.0	7.0	0.4	0.5	0.7	159	2	SDL-3
10 - 1000	25/20	30/17	25/17	0.5/0.8	0.6/1.0	1.0/1.5	2.0	4.0	7.0	0.4	0.5	0.7	134J	2	SDZ-3
20 - 2000	20/15	20/15	25/15	0.6/0.8	0.7/1.0	0.8/1.5	2.0	3.0	5.0	0.2	0.3	0.5	159	2	SDL-6
500 - 1500	20/15	20/15	18/13	0.6/0.8	0.7/0.8	1.0/1.4	3.0	4.0	7.0	0.3	0.4	0.7	159	2	SDL-4 ♦
700 - 900	-/-	-/-	23/20	-/-	-/-	0.5/0.8	-/-	-/-	2.0	-/-	-/-	0.5	134J	2	SDZ-125 †
1200 - 1600	-/-	-/-	25/18	-/-	-/-	1.0/1.5	-/-	-/-	3.0	-/-	-/-	0.3	159	2	SDL-5 †
1700 - 2500	-/-	-/-	20/16	-/-	-/-	0.8/1.3	-/-	-/-	10	-/-	-/-	0.9	159	2	SDL-7 †

New! SYNSTRIP® SURFACE MOUNT



FREQUENCY RANGE (MHz)	ISOLATION (dB)	INSERTION LOSS (dB)	PHASE UNBALANCE (Degrees)	AMPLITUDE UNBALANCE (dB)	VSWR	PACKAGE	PIN-OUT (See Below)	MODEL
	Full Band TYP/MIN	Full Band TYP/MAX	Full Band TYP/MAX	Full band TYP/MAX	TYP/MAX			
650 - 1200	22/12	0.2/0.3	1.0/2.0	±0.15/0.20	1.3/1.5:1	234	3	S2D6512**
800 - 1200	25/20	0.2/0.4	1.0/2.0	±0.2/0.4	1.3/1.4:1	234	3	S2D8120¥§
1400 - 2600	20/12	0.3/0.4	1.0/2.0	±0.20/0.25	1.3/1.5:1	245	3	S2D1426**
2000 - 2500	25/18	0.3/0.4	1.0/2.0	±0.2/0.4	1.3/1.4:1	234	3	S2D2025¥

Notes:

- 75 Ohm Model
- Power Rating(All Models) = 1 watt, max
- ♦ LB = 500-700 MHz, MB = 750-1000 MHz, UB = 1000-1500 Mhz
- † (UB) - Denotes full bandwidth specification
- * Expanded frequency range available
- § Expanded frequency range available
- ** 50 Ohms, 5 Watts with mismatch of 1.2:1 or less
- ¥ 50 Ohms, 10 Watts with mismatch of 1.2:1 or less

PIN-OUT TABLE

	INPUT	OUTPUT	*GROUND
#1	2	4,6	1,3,5
#2	6	3,4	1,2,5
#3	1	2,3	All other

*GROUND = Ground externally

For pin location and package outline drawings, see back pages.

LB = LF to 10 LF
MB = 10 LF to HF/2
UB = HF/2 to HF



POWER DIVIDERS

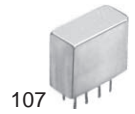
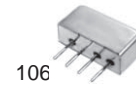
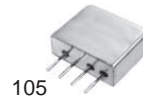
0° : 2-WAY

THROUGH HOLE MOUNT (8 Pin-Relay Can)



FREQUENCY RANGE (MHz)	ISOLATION (dB)			INSERTION LOSS (dB)			PHASE UNBALANCE (Degrees)			AMPLITUDE UNBALANCE (dB)			PACKAGE	PIN-OUT (See Below)	MODEL
	LB TYP/MIN	MB TYP/MIN	UB TYP/MIN	LB TYP/MAX	MB TYP/MAX	UB TYP/MAX	LB MAX	MB MAX	UB MAX	LB MAX	MB MAX	UB MAX			
0.004-60	27/20	30/20	27/20	0.3/0.6	0.3/0.6	0.6/1.0	2.0	3.0	4.0	.15	.25	0.3	102	1	DSP-2B1
0.01-100	30/20	27/20	25/20	0.3/0.6	0.3/0.5	0.5/1.0	2.0	2.0	2.0	0.2	0.2	0.2	102	1	DSP-201
0.1-400	20/15	25/20	25/20	0.2/0.6	0.4/.75	0.6/1.0	2.0	3.0	4.0	.15	0.2	0.3	102	1	DSP-2A3
0.25-300	20/15	30/20	20/15	0.4/.75	0.4/.75	0.4/1.0	2.0	3.0	5.0	.15	0.2	0.3	102	1	DSP-2A2 ■
0.5-500	25/20	30/23	30/20	0.4/0.6	0.4/0.7	0.5/1.0	2.0	2.0	3.0	0.2	0.2	0.2	103	1	DSP-202
1-400	28/20	28/20	25/20	0.4/.65	0.5/0.8	0.7/1.0	3.0	3.0	4.0	0.3	0.3	0.3	103	1	DSP-209
1-650	30/20	28/20	25/20	0.4/0.5	0.4/0.8	0.8/1.0	2.0	3.0	5.0	.15	0.2	0.3	102	1	DSP-222
5-2000	21/16	22/18	19/14	0.2/0.5	0.5/0.8	0.8/1.1	1.0	3.0	5.0	0.2	0.4	0.6	102	1	DSP-2A6
10-850	31/20	32/23	23/15	0.3/0.5	0.4/0.6	0.5/1.0	2.0	5.0	10.0	0.1	0.2	0.5	102	1	DSP-2D4 ■
10-1000	30/20	28/20	25/20	0.2/0.5	0.6/1.0	0.9/1.2	2.0	4.0	6.0	0.2	0.2	0.4	102	1	DSP-212
10-1000	30/25	25/20	25/20	0.6/1.0	0.6/1.2	0.7/1.2	2.0	8.0	10.0	.15	0.2	0.4	102	1	DSP-2C4
10-1400	28/18	22/17	24/17	0.3/0.6	0.6/1.0	0.9/1.6	2.0	3.0	4.0	.15	0.2	0.4	102	1	DSP-2A5

MINI RELAY HEADER (4-Pin and 8 Pin)



FREQUENCY RANGE (MHz)	ISOLATION (dB)			INSERTION LOSS (dB)			PHASE UNBALANCE (Degrees)			AMPLITUDE UNBALANCE (dB)			PACKAGE	PIN-OUT (See Below)	MODEL
	LB TYP/MIN	MB TYP/MIN	UB TYP/MIN	LB TYP/MAX	MB TYP/MAX	UB TYP/MAX	LB MAX	MB MAX	UB MAX	LB MAX	MB MAX	UB MAX			
0.1-450	20/15	30/20	30/20	0.3/0.5	0.4/.75	0.6/1.0	2.0	3.0	4.0	.15	0.2	0.3	107	1	DSP-4B4
1-400	30/25	30/25	30/20	.25/0.5	0.5/.75	0.7/1.0	2.0	3.0	4.0	.15	0.2	0.6	106	2	DSP-3C3
1-400	28/20	28/20	25/20	0.4/.65	0.5/0.8	0.7/1.0	3.0	3.0	4.0	0.3	0.3	0.3	105	2	DSP-309
1-500	25/20	30/23	30/20	0.4/0.6	0.4/0.7	0.5/1.0	2.0	2.0	2.0	0.2	0.2	0.3	105	2	DSP-302
1-400	28/20	28/20	25/20	0.4/.65	0.5/0.8	0.7/1.0	3.0	3.0	4.0	0.3	0.3	0.3	107	1	DSP-409
1-500	25/20	30/23	30/20	0.4/0.6	0.4/0.7	0.5/2.0	2.0	2.0	2.0	0.2	0.2	0.3	107	1	DSP-402
2-650	22/18	30/20	22/18	0.3/0.5	0.5/0.8	0.8/1.2	1.0	2.0	4.0	0.3	0.2	0.3	107	1	DSP-4A4
5-1500	18/16	20/16	20/14	0.6/0.8	0.6/0.8	0.6/1.1	2.0	3.0	5.0	0.2	0.3	0.4	107	1	DSP-4A5

FLAT-PACK



FREQUENCY RANGE (MHz)	ISOLATION (dB)			INSERTION LOSS (dB)			PHASE UNBALANCE (Degrees)			AMPLITUDE UNBALANCE (dB)			PACKAGE	PIN-OUT (See Below)	MODEL
	LB TYP/MIN	MB TYP/MIN	UB TYP/MIN	LB TYP/MAX	MB TYP/MAX	UB TYP/MAX	LB MAX	MB MAX	UB MAX	LB MAX	MB MAX	UB MAX			
1-500	25/20	30/20	30/20	0.4/0.7	0.4/0.7	0.5/1.2	2.0	2.0	3.0	0.2	0.2	0.2	101	3	DSF-102
2-1500	25/20	25/20	18/15	0.8/1.3	0.5/1.0	1.0/1.5	2.0	4.0	8.0	0.2	0.3	0.4	101	3	DSF-103
5-1000	30/20	30/23	25/20	0.3/0.5	0.5/0.8	0.6/1.0	3.0	2.0	5.0	0.2	0.2	0.2	101	3	DSF-109

Notes: ■ 75 Ohm Model
 Power Rating(All Models) = 1 watt, max
 For pin location and package outline drawings, see back pages.

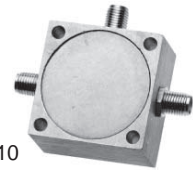
LB = LF to 10 LF
 MB = 10 LF to HF/2
 UB = HF/2 to HF

PIN-OUT TABLE

	INPUT	OUTPUT	CASE GROUND
#1	1	5,6	All Other
#2	1	2,4	3
#3	8	1,5	All other

POWER DIVIDERS

0° : 2-WAY



110

COAXIAL CONNECTOR

FREQUENCY RANGE (MHz)	ISOLATION (dB)			INSERTION LOSS (dB)			PHASE UNBALANCE (Degrees)			AMPLITUDE UNBALANCE (dB)			PACKAGE	PIN-OUT (See Below)	MODEL
	LB TYP/MIN	MB TYP/MIN	UB TYP/MIN	LB TYP/MAX	MB TYP/MAX	UB TYP/MAX	LB MAX	MB MAX	UB MAX	LB MAX	MB MAX	UB MAX			
0.01-100	30/20	27/20	25/20	0.3/0.6	0.3/0.5	0.5/1.0	2.0	2.0	2.0	0.2	0.2	0.2	110	1	DSK-701*
0.25-300	20/15	30/25	25/20	0.4/.75	0.4/.75	0.4/1.0	2.0	3.0	5.0	.15	0.2	0.3	110	1	DSK-7A2B ■
1-500	25/20	30/23	30/20	0.4/0.6	0.4/0.7	0.5/1.0	2.0	2.0	3.0	0.2	0.2	0.2	110	1	DSK-702*
1-750	30/20	28/20	25/20	0.2/0.5	0.4/0.8	0.8/1.0	2.0	4.0	4.0	.15	.15	0.3	110	1	DSK-7E4*
2-200	35/30	35/30	35/30	0.2/0.5	0.3/0.5	0.4/0.5	1.0	1.0	1.0	0.2	0.2	0.2	110	1	DSK-7M2*
2-1500	25/20	25/20	25/20	0.8/1.3	0.6/1.2	0.5/1.5	2.0	4.0	6.0	0.2	0.2	0.3	110	1	DSK-703*
5-400	40/30	38/30	35/30	0.2/0.4	0.3/0.5	0.4/0.5	2.0	2.0	2.0	0.2	0.2	0.2	110	1	DSK-718*
5-500	35/30	40/30	35/30	0.3/0.5	0.3/0.5	0.4/.65	2.0	2.0	3.0	0.2	0.2	0.2	110	1	DSK-717*
10-1000	30/20	30/20	25/20	0.2/0.5	0.5/1.0	0.9/1.2	2.0	3.0	5.0	.15	.15	0.3	110	1	DSK-712*
10-1000	30/25	33/25	30/25	0.2/0.5	0.4/0.7	0.6/0.8	2.0	2.0	3.0	0.2	0.2	0.25	110	1	DSK-709*

COAXIAL CONNECTOR



144

164

206

220

215

FREQUENCY RANGE	ISOLATION (dB)			INSERTION LOSS (dB)			PHASE UNBALANCE (Degrees)			AMPLITUDE UNBALANCE (dB)			PACKAGE	PIN-OUT (See)	MODEL
	LB	MB	UB	LB	MB	UB	LB	MB	UB	LB	MB	UB			
5-2000	25/20	25/20	23/15	0.6/0.9	0.9/1.4	1.2/1.8	2.0	3.0	5.0	0.2	0.3	0.4	144	2	DSK-726S
700-900	-/-	-/-	30/24	-/-	-/-	0.3/1.0	-	-	5.0	-	-	0.5	164	2	DSK-724S †
800-2200	-/-	-/-	22/20	-/-	-/-	0.4/0.5	-	-	2.0	-	-	0.4	215	2	DSK-729S †
800-2400	-/-	-/-	20/18	-/-	-/-	0.6/0.8	-	-	4.0	-	-	0.5	206	2	DSK-H3N †
1700-2200	-/-	-/-	20/18	-/-	-/-	0.3/0.4	-	-	3.0	-	-	0.3	220	2	DSK-H1N †

Power Rating (All Models) = 1 Watt, max
 * Select female connector suffix: "B" = BNC, "S" = SMA, "N" = Type N, "T" = TNC
 ■ 75 Ohm Model
 † (UB) - Denotes full bandwidth specification
 For pin location and package outline drawings, see back pages.

PIN-OUT TABLE

	INPUT	OUTPUT	CASE GROUND
#1	2	1,3	--
#2	1	2,3	--

LB = LF to 10 LF
 MB = 10 LF to HF/2
 UB = HF/2 to HF

POWER DIVIDERS

0° : 2-WAY

THROUGH HOLE (TO-8 and TO-5)



FREQUENCY RANGE (MHz)	ISOLATION (dB)			INSERTION LOSS (dB)			PHASE UNBALANCE (Degrees)			AMPLITUDE UNBALANCE (dB)			PACKAGE	PIN-OUT (See Below)	MODEL
	LB TYP/MIN	MB TYP/MIN	UB TYP/MIN	LB TYP/MAX	MB TYP/MAX	UB TYP/MAX	LB MAX	MB MAX	UB MAX	LB MAX	MB MAX	UB MAX			
0.01-100	30/20	27/20	25/20	0.3/0.6	0.3/0.5	0.5/1.0	2.0	2.0	2.0	0.2	0.2	0.2	122	3	DSP-601
1-100	37/30	35/30	35/30	0.2/0.5	0.3/0.5	0.4/0.5	1.0	1.0	1.0	0.1	0.1	0.1	127	2	DSP-8D1
1-500	25/20	30/23	30/20	0.4/0.6	0.4/0.7	0.5/1.0	2.0	2.0	3.0	0.2	0.2	0.2	122	3	DSP-602
1-500	25/20	30/23	30/20	0.4/0.6	0.4/0.7	0.5/1.0	2.0	2.0	2.0	0.2	0.2	0.2	104	1	DSP-502
1-500	25/20	30/23	30/20	0.4/0.6	0.4/0.7	0.5/1.0	2.0	2.0	2.0	0.2	0.2	0.2	126	3	DSP-802
10-1000	25/20	30/20	25/20	0.2/0.5	0.5/0.8	0.6/1.0	3.0	2.0	4.0	0.2	0.2	0.3	122	3	DSP-609

Power Rating (All Models) = 1 Watt, max
For pin location and package outline drawings, see back pages.

LB = LF to 10 LF
MB = 10 LF to HF/2
UB = HF/2 to HF

	INPUT	OUTPUT	CASE GROUND
#1	8	11,5	All Other
#2	3	2,4	1,5
#3	3	2,4	1

POWER DIVIDERS

0° : 3-WAY

LEADED SURFACE-MOUNT



FREQUENCY RANGE (MHz)	ISOLATION (dB)			INSERTION LOSS (dB)			PHASE UNBALANCE (Degrees)			AMPLITUDE UNBALANCE (dB)			PACKAGE	PIN-OUT (See Below)	MODEL
	LB TYP/MIN	MB TYP/MIN	UB TYP/MIN	LB TYP/MAX	MB TYP/MAX	UB TYP/MAX	LB MAX	MB MAX	UB MAX	LB MAX	MB MAX	UB MAX			
2-200	30/23	27/20	23/18	0.6/0.8	0.4/0.7	0.7/1.0	3.0	3.0	3.0	0.4	0.3	0.4	159	1	SDL-110
5-750	25/18	25/20	23/18	0.6/1.4	0.8/1.6	1.5/1.8	3.0	5.0	7.0	0.3	0.5	0.75	159	1	SDL-135
5-750	25/18	25/20	23/18	0.6/1.4	0.8/1.6	1.5/1.8	3.0	5.0	7.0	0.3	0.5	0.75	134J	1	SDZ-135
720-800	---/---	---/---	18/15	---/---	---/---	1.0/1.4	--	--	5.0	--	--	0.7	159	1	SDL-115 †
850-950	---/---	---/---	17/13	---/---	---/---	1.0/1.4	--	--	5.0	--	--	0.7	159	1	SDL-137 †

SURFACE-MOUNT



FREQUENCY RANGE (MHz)	ISOLATION (dB)			INSERTION LOSS (dB)			PHASE UNBALANCE (Degrees)			AMPLITUDE UNBALANCE (dB)			PACKAGE	PIN-OUT (See Below)	MODEL
	LB TYP/MIN	MB TYP/MIN	UB TYP/MIN	LB TYP/MAX	MB TYP/MAX	UB TYP/MAX	LB MAX	MB MAX	UB MAX	LB MAX	MB MAX	UB MAX			
1700-2200	--/--	--/--	23/18	--/--	--/--	0.4/0.8	--	--	5.0	--	--	0.5	133M	2	SPD-C9 †

New! SYNSTRIP® SURFACE MOUNT



FREQUENCY RANGE (MHz)	ISOLATION (dB) Full Band TYP/MIN	INSERTION LOSS (dB) Full Band TYP/MAX	PHASE UNBALANCE (Degrees) Full Band TYP/MAX	AMPLITUDE UNBALANCE (dB) Full band TYP/MAX	VSWR TYP/MAX	PACKAGE	PIN-OUT (See Below)	MODEL
1700 - 2300	22/16	0.2/0.35	2.0/3.0	±0.15/0.3	1.3:1/1.5:1	242	3	S3D1723*
2000 - 2500	25/18	0.2/0.3	2.0/3.0	±0.2/0.3	1.3:1/1.4:1	242	3	S3D2025*

* 50 Ohms with mismatch of 1.2:1 or less, Power Rating = 5 Watt, max
 † (UB) -Denotes full bandwidth specification
 For pin location and package outline drawings, see back pages.

LB = LF to 10 LF
 MB = 10 LF to HF/2
 UB = HF/2 to HF

PIN-OUT TABLE

	INPUT	OUTPUT	CASE GROUND
#1	6	1,3,4	2,5
#2	1	2,3,4	
#3	1	2,3,4	All Others

POWER DIVIDERS

0° : 3-WAY



THROUGH HOLE MOUNT (8 Pin-Relay Can)

FREQUENCY RANGE (MHz)	ISOLATION (dB)			INSERTION LOSS (dB)			PHASE UNBALANCE (Degrees)			AMPLITUDE UNBALANCE (dB)			PACKAGE	PIN-OUT (See Below)	MODEL
	LB TYP/MIN	MB TYP/MIN	UB TYP/MIN	LB TYP/MAX	MB TYP/MAX	UB TYP/MAX	LB MAX	MB MAX	UB MAX	LB MAX	MB MAX	UB MAX			
0.01-30	35/30	40/25	30/25	.25/.45	.15/.45	.45/.75	1.0	2.0	4.0	0.2	0.3	0.4	102	1	DCP-2A1
1-200	45/27	40/30	40/25	0.6/1.0	0.4/0.7	0.6/1.0	1.0	2.0	4.0	0.2	0.2	0.4	102	1	DCP-2B2
1-200	35/23	35/25	35/25	0.6/1.0	0.3/0.7	0.6/1.0	2.0	3.0	4.0	0.2	0.2	0.3	102	1	DCP-2C2
5-500	25/20	31/15	25/15	0.4/0.8	0.4/1.4	0.8/1.4	6.0	8.0	10	0.2	0.3	0.6	102	2	DCP-2B3
10-1000	25/20	23/18	23/18	0.6/1.0	0.8/1.3	1.2/2.0	6.0	8.0	12	0.2	0.4	0.8	102	2	DCP-2B4



COAXIAL CONNECTOR

FREQUENCY RANGE (MHz)	ISOLATION (dB)			INSERTION LOSS (dB)			PHASE UNBALANCE (Degrees)			AMPLITUDE UNBALANCE (dB)			PACKAGE	PIN-OUT (See Below)	MODEL
	LB TYP/MIN	MB TYP/MIN	UB TYP/MIN	LB TYP/MAX	MB TYP/MAX	UB TYP/MAX	LB MAX	MB MAX	UB MAX	LB MAX	MB MAX	UB MAX			
1-200	45/30	48/35	37/30	0.25/0.5	.35/0.6	.35/0.6	1.0	3.0	5.0	0.1	0.2	0.2	113	3	DCK-7K2*
1-500	30/20	30/20	25/18	0.4/0.75	0.5/0.9	0.8/1.2	2.0	3.0	4.0	0.2	0.3	0.4	113	3	DCK-7J2*
2-750	30/20	30/20	25/18	0.4/0.75	0.5/1.0	1.0/1.6	3.0	5.0	7.0	0.2	0.3	0.5	113	3	DCK-7D3*
10-1000	25/20	20/17	20/17	0.5/0.75	0.7/1.0	1.2/2.0	3.0	5.0	7.0	0.3	0.4	0.7	113	3	DCK-703S

Power Rating (All Models) = 1 Watt, max

* Select female connector suffix: "B" = BNC, "S" = SMA, "N" = Type N, "T" = TNC

■ 75 Ohm Model

For pin location and package outline drawings, see back pages.

PIN-OUT TABLE

	INPUT	OUTPUT	CASE GROUND
#1	6	1,2,5	3,4,7,8
#2	1	5,7,8	2,3,4,6
#3	1	2,3,4	-

LB = LF to 10 LF
MB = 10 LF to HF/2
UB = HF/2 to HF



POWER DIVIDERS

0° : 4-WAY

SURFACE-MOUNT MODELS



FREQUENCY RANGE (MHz)	ISOLATION (dB)			INSERTION LOSS (dB)			PHASE UNBALANCE (Degrees)			AMPLITUDE UNBALANCE (dB)			PACKAGE	PIN-OUT (See Below)	MODEL
	LB TYP/MIN	MB TYP/MIN	UB TYP/MIN	LB TYP/MAX	MB TYP/MAX	UB TYP/MAX	LB TYP/MAX	MB TYP/MAX	UB TYP/MAX	LB TYP/MAX	MB TYP/MAX	UB TYP/MAX			
1 - 100	23/20	--/--	25/20	0.7/1.0	--/--	0.5/1.0	1/3	--/--	2.0/3.0	0.3/0.4	--/--	0.3/0.4	159	1	SDL-140
20 - 400	25/18	--/--	20/17	1.0/1.3	--/--	1.4/1.8	1/3	--/--	3.0/5.0	0.3/0.4	--/--	0.5/0.75	159	1	SDL-120
700 - 900	--/--	--/--	25/23	--/--	--/--	1.0/1.4	--/--	--/--	4.0/6.0	--/--	--/--	0.6/0.8	129	2	SPD-C6[†]
1700 - 2000	--/--	--/--	22/16	--/--	--/--	0.5/0.8	--/--	--/--	5.0/7.0	--/--	--/--	0.3/0.5	233	4	M4D1720
1900-2200	--/--	--/--	25/20	--/--	--/--	0.7/1.2	--/--	--/--	3.0/5.0	--/--	--/--	0.3/0.5	219	4	DSS-1900[†]
2100-2400	--/--	--/--	23/20	--/--	--/--	1.0/1.2	--/--	--/--	3.0/5.0	--/--	--/--	0.3/0.5	219	4	DSS-2100[†]

New! SYNSTRIP[®] SURFACE MOUNT



FREQUENCY RANGE (MHz)	ISOLATION (dB) Full Band TYP/MIN	INSERTION LOSS (dB) Full Band TYP/MAX	PHASE UNBALANCE (Degrees) Full Band TYP/MAX	AMPLITUDE UNBALANCE (dB) Full band TYP/MAX	VSWR TYP/MAX	PACKAGE	PIN-OUT (See Below)	MODEL
1500 - 2500	23/16	0.3/0.5	3.0/4.0	±0.2/0.4	1.3/1.4:1	246	4	S4D1525*
2000 - 2800	23/16	0.5/0.8	3.0/5.0	±0.3/0.5	1.3/1.4:1	246	4	S4D2028*

THROUGH HOLE MOUNT (8 Pin-Relay Header)



FREQUENCY RANGE (MHz)	ISOLATION (dB)			INSERTION LOSS (dB)			PHASE UNBALANCE (Degrees)			AMPLITUDE UNBALANCE (dB)			PACKAGE	PIN-OUT (See Below)	MODEL
	LB TYP/MIN	MB TYP/MIN	UB TYP/MIN	LB TYP/MAX	MB TYP/MAX	UB TYP/MAX	LB MAX	MB MAX	UB MAX	LB MAX	MB MAX	UB MAX			
0.01-40	35/20	32/25	25/20	0.4/0.8	0.3/0.5	0.5/1.0	3	3	4	0.2	.15	0.2	102	3	DSP-206
0.1-200	33/20	30/20	27/20	0.4/0.6	0.5/.75	0.7/1.0	4	6	8	0.15	0.2	.25	102	3	DSP-2D2
0.25-250	33/20	30/20	27/20	0.4/0.7	0.5/.75	0.7/1.2	4	6	8	0.15	0.2	.25	102	3	DSP-2F2
1-200	30/20	25/20	25/20	0.4/0.7	0.5/0.9	0.7/1.2	4	6	10	0.15	0.2	0.3	102	3	DSP-2E2 ■
1-250	33/20	30/20	27/20	0.4/0.7	0.5/.75	0.7/1.2	3	3	4	0.25	0.2	0.3	102	3	DSP-204
1-500	25/20	27/20	25/20	0.6/1.2	0.8/1.5	1.4/2.2	4	4	6	0.5	0.4	0.5	102	3	DSP-207
10-1000	25/20	24/20	24/20	1.2/1.7	1.2/1.9	1.6/2.3	5	7	10	0.2	0.5	0.8	102	3	DSP-2E4 ■
1900-2130	--/--	--/--	25/20	--/--	--/--	1.8/2.4	-	-	6	-	-	0.7	102	3	DSP-247[†]

Power Rating (All Models) = 1 Watt, max
 * Power rating = 5 watts with mismatch of 1.2:1 or less
 ■ 75 Ohm Model
[†] (UB) - Denotes full bandwidth specification

For pin location and package outline drawings, see back pages.

	INPUT	OUTPUT	CASE GROUND
#1	5	1,3,4,6	2
#2	2	1,3,4,6	All other
#3	4	1,2,7,8	All other
#4	1	2,3,4,5	All other

LB = LF to 10 LF
 MB = 10 LF to HF/2
 UB = HF/2 to HF



POWER DIVIDERS

0° : 4-WAY



THROUGH HOLE MOUNT (TO-8)

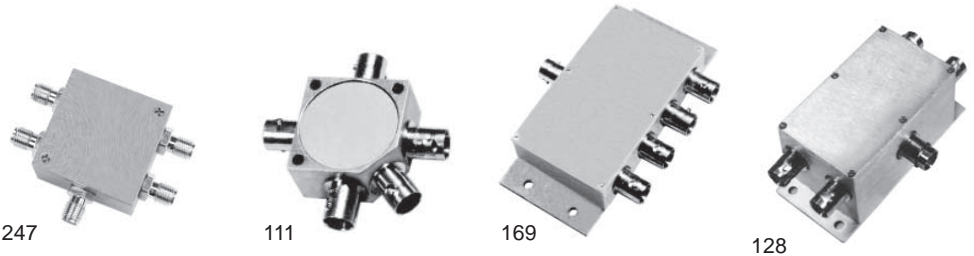
FREQUENCY RANGE (MHz)	ISOLATION (dB)			INSERTION LOSS (dB)			PHASE UNBALANCE (Degrees)			AMPLITUDE UNBALANCE (dB)			PACKAGE	PIN-OUT (See Below)	MODEL
	LB TYP/MIN	MB TYP/MIN	UB TYP/MIN	LB TYP/MAX	MB TYP/MAX	UB TYP/MAX	LB MAX	MB MAX	UB MAX	LB MAX	MB MAX	UB MAX			
0.01-40	35/20	32/25	25/20	0.4/0.8	0.3/0.5	0.5/1.0	3	3	4	0.2	0.15	0.2	123	3	DSP-506
1-250	33/20	30/20	27/20	0.4/0.7	0.5/.75	0.7/1.2	3	3	4	0.25	0.2	0.3	123	3	DSP-504
1-500	25/20	27/20	25/20	0.6/1.2	0.8/1.5	1.4/2.2	4	4	6	0.5	0.4	0.5	123	3	DSP-507



THROUGH HOLE MOUNT (16 Pin-Header)

FREQUENCY RANGE (MHz)	ISOLATION (dB)			INSERTION LOSS (dB)			PHASE UNBALANCE (Degrees)			AMPLITUDE UNBALANCE (dB)			PACKAGE	PIN-OUT (See Below)	MODEL
	LB TYP/MIN	MB TYP/MIN	UB TYP/MIN	LB TYP/MAX	MB TYP/MAX	UB TYP/MAX	LB MAX	MB MAX	UB MAX	LB MAX	MB MAX	UB MAX			
10-800	30/20	33/20	25/18	0.4/0.7	0.7/0.9	1.3/1.6	5.0	7.0	10	0.2	0.4	0.8	124	1	DSP-9E4 ■
10-1000	25/20	21/15	18/15	0.5/0.8	0.8/1.8	1.5/2.5	4.0	6.0	10	0.2	0.5	0.7	124	1	DSP-9D4
10-1000	25/20	25/18	20/15	0.8/1.5	1.0/2.0	1.5/2.5	4.0	6.0	10	0.4	0.5	0.7	124	1	DSP-908

COAXIAL CONNECTOR



FREQUENCY RANGE (MHz)	ISOLATION (dB)			INSERTION LOSS (dB)			PHASE UNBALANCE (Degrees)			AMPLITUDE UNBALANCE (dB)			PACKAGE	PIN-OUT (See Below)	MODEL
	LB TYP/MIN	MB TYP/MIN	UB TYP/MIN	LB TYP/MAX	MB TYP/MAX	UB TYP/MAX	LB MAX	MB MAX	UB MAX	LB MAX	MB MAX	UB MAX			
0.01-40	35/20	32/25	25/20	0.4/0.8	0.3/0.5	0.5/1.0	3.0	3.0	4.0	0.2	0.15	0.2	111	2	DSK-706*
1-200	30/20	25/20	25/20	0.4/0.7	0.5/0.9	0.7/1.2	4.0	6.0	10.0	0.15	0.2	0.3	169	2	DSK-7E2B ■
1-250	33/20	30/20	27/20	0.4/0.7	0.5/.75	0.7/1.2	3.0	3.0	4.0	.25	0.2	0.3	111	2	DSK-704*
1-500	25/20	25/20	23/20	0.8/1.2	0.6/1.2	1.0/1.5	4.0	3.0	5.0	0.4	0.3	0.4	111	2	DSK-707*
1-1000	25/15	25/20	20/15	0.6/1.5	1.0/2.0	1.5/2.5	5.0	6.0	8.0	0.5	0.5	0.5	111	2	DSK-708*
5-2000	25/20	20/15	20/15	1.3/1.8	1.0/2.3	2.5/2.8	2.0	4.0	8.0	0.2	0.4	0.6	247	2	DSK-745S
10-500	33/25	30/25	28/25	0.5/0.7	0.7/.85	.85/1.0	2.0	4.0	6.0	0.2	0.2	0.4	128	2	DSK-711S
20-1000	30/25	30/23	25/20	0.6/1.2	0.8/1.3	1.0/1.5	3.0	4.0	8.0	0.3	0.4	0.5	128	2	DSK-713S
30-1000	30/25	30/25	30/25	0.8/1.0	0.8/1.0	0.8/1.1	2.0	3.5	8.0	0.3	0.3	0.5	128	2	DSK-705S

Power Rating (All Models) = 1 Watt, max
 * Select female connector suffix: "B" = BNC, "S" = SMA, "N" = Type N, "T" = TNC
 ■ 75 Ohm Model
 For pin location and package outline drawings, see back pages.

LB = LF to 10 LF
 MB = 10 LF to HF/2
 UB = HF/2 to HF

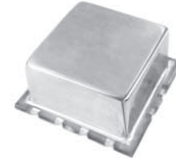
PIN-OUT TABLE

	INPUT	OUTPUT	CASE GROUND
#1	2	5,8,9,12	All other
#2	1	2,3,4,5	All other
#3	2	4,6,10,12	All Other



POWER DIVIDERS

0° : 5-WAY



SURFACE MOUNT

FREQUENCY RANGE (MHz)	ISOLATION (dB)			INSERTION LOSS (dB)			PHASE UNBALANCE (Degrees)			AMPLITUDE UNBALANCE (dB)			PACKAGE	PIN-OUT (See Below)	MODEL
	LB TYP/MIN	MB TYP/MIN	UB TYP/MIN	LB TYP/MAX	MB TYP/MAX	UB TYP/MAX	LB MAX	MB MAX	UB MAX	LB MAX	MB MAX	UB MAX			
0.05-30	28/20	30/25	25/20	0.4/0.8	0.3/0.7	0.6/1.0	4.0	4.0	4.0	0.3	0.3	0.3	124S	1	DES-901
1-300	25/20	23/18	20/17	0.2/0.5	0.6/1.0	1.5/2.0	2.0	4.0	8.0	0.2	0.3	0.6	124S	1	DES-9G2



THROUGH HOLE MOUNT(16-Pin)

FREQUENCY RANGE (MHz)	ISOLATION (dB)			INSERTION LOSS (dB)			PHASE UNBALANCE (Degrees)			AMPLITUDE UNBALANCE (dB)			PACKAGE	PIN-OUT (See Below)	MODEL
	LB TYP/MIN	MB TYP/MIN	UB TYP/MIN	LB TYP/MAX	MB TYP/MAX	UB TYP/MAX	LB MAX	MB MAX	UB MAX	LB MAX	MB MAX	UB MAX			
0.05-30	28/20	30/25	25/20	0.4/0.8	0.3/0.7	0.6/1.0	4.0	4.0	4.0	0.3	0.3	0.3	124	2	DEP-901
1-300	25/20	23/18	20/17	0.2/0.5	0.6/1.0	1.5/2.0	2.0	4.0	8.0	0.2	0.3	0.6	124	2	DEP-9G2



COAXIAL CONNECTOR

FREQUENCY RANGE (MHz)	ISOLATION (dB)			INSERTION LOSS (dB)			PHASE UNBALANCE (Degrees)			AMPLITUDE UNBALANCE (dB)			PACKAGE	PIN-OUT (See Below)	MODEL
	LB TYP/MIN	MB TYP/MIN	UB TYP/MIN	LB TYP/MAX	MB TYP/MAX	UB TYP/MAX	LB MAX	MB MAX	UB MAX	LB MAX	MB MAX	UB MAX			
0.05-30	25/20	30/25	25/20	0.5/0.9	0.3/0.7	0.6/1.0	4.0	4.0	4.0	0.3	0.3	0.3	157	3	DEK-701*
1-300	25/20	23/18	20/17	0.2/0.5	0.6/1.0	1.5/2.0	2.0	4.0	8.0	0.2	0.3	0.6	157	3	DEK-7G2*

Power Rating (All Models) = 1 Watt, max

* Select female connector suffix: "B" = BNC, "S" = SMA, "N" = Type N, "T" = TNC
For pin location and package outline drawings, see back pages.

LB = LF to 10 LF
MB = 10 LF to HF/2
UB = HF/2 to HF

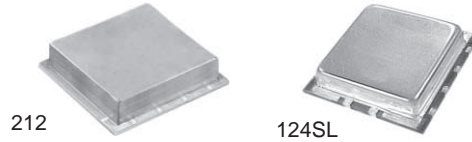
PIN-OUT TABLE

	INPUT	OUTPUT	CASE GROUND	NO CONN.
#1	1	4,8,12,15,16	2,5,13,14	3,9
#2	1	4,8,12,15,16	2,5,7,11,13,14	3,6,9,10
#3	1	2,3,4,5,6	-	-

POWER DIVIDERS

0° : 6-WAY

SURFACE MOUNT



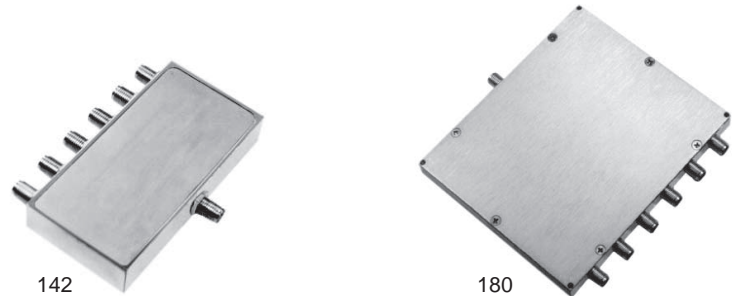
FREQUENCY RANGE (MHz)	ISOLATION (dB)			INSERTION LOSS (dB)			PHASE UNBALANCE (Degrees)			AMPLITUDE UNBALANCE (dB)			PACKAGE	PIN-OUT (See Below)	MODEL
	LB TYP/MIN	MB TYP/MIN	UB TYP/MIN	LB TYP/MAX	MB TYP/MAX	UB TYP/MAX	LB MAX	MB MAX	UB MAX	LB MAX	MB MAX	UB MAX			
1-100	30/25	28/25	25/23	0.5/0.8	0.7/1.0	0.7/1.2	2.0	4.0	8.0	0.2	0.3	0.5	124SL	1	DFS-9B1
1-175	30/24	26/18	26/18	0.5/0.8	0.7/1.0	1.0/1.5	4.0	6.0	12	0.2	0.4	0.8	124SL	1	DFS-9H2
5-200	30/25	28/23	25/20	0.4/0.7	0.5/0.8	0.8/1.2	2.0	3.0	4.0	0.2	0.3	0.4	124SL	1	DFS-902
5-500	30/20	25/20	25/20	0.5/0.8	0.7/0.8	0.8/1.4	3.0	4.0	6.0	0.3	0.5	0.7	124SL	1	DFS-903
1600-2200	--/--	--/--	25/20	--/--	--/--	0.6/0.8	--	--	6.0	--	--	0.5	212	3	DFS-1600†

THROUGH HOLE MOUNT(16 -Pin)



FREQUENCY RANGE (MHz)	ISOLATION (dB)			INSERTION LOSS (dB)			PHASE UNBALANCE (Degrees)			AMPLITUDE UNBALANCE (dB)			PACKAGE	PIN-OUT (See Below)	MODEL
	LB TYP/MIN	MB TYP/MIN	UB TYP/MIN	LB TYP/MAX	MB TYP/MAX	UB TYP/MAX	LB MAX	MB MAX	UB MAX	LB MAX	MB MAX	UB MAX			
1-100	30/25	28/25	25/23	0.5/0.8	0.7/1.0	0.7/1.2	2.0	4.0	8.0	0.2	0.3	0.5	124	2	DFP-9B1
1-175	30/24	26/18	26/18	0.5/0.8	0.7/1.0	1.0/1.5	4.0	6.0	12	0.2	0.4	0.8	124	2	DFP-9H2
5-200	30/25	28/23	25/20	0.4/0.7	0.5/0.8	0.8/1.2	2.0	3.0	4.0	0.2	0.3	0.4	124	2	DFP-902
5-500	30/20	25/20	25/20	0.5/0.8	0.7/0.8	0.8/1.4	3.0	4.0	6.0	0.3	0.5	0.7	124	2	DFP-903

COAXIAL CONNECTOR



FREQUENCY RANGE (MHz)	ISOLATION (dB)			INSERTION LOSS (dB)			PHASE UNBALANCE (Degrees)			AMPLITUDE UNBALANCE (dB)			PACKAGE	PIN-OUT (See Below)	MODEL
	LB TYP/MIN	MB TYP/MIN	UB TYP/MIN	LB TYP/MAX	MB TYP/MAX	UB TYP/MAX	LB MAX	MB MAX	UB MAX	LB MAX	MB MAX	UB MAX			
5-200	30/25	28/23	25/20	0.4/0.7	0.5/0.8	0.8/1.2	2.0	3.0	4.0	0.2	0.3	0.4	142	3	DFK-702S
5-500	26/23	30/23	25/20	0.4/0.7	0.6/0.9	1.2/1.6	2.0	4.0	7.0	0.2	0.3	0.4	142	3	DFK-703S
800-1000	--/---	--/---	30/20	--/---	--/---	1.4/1.8	-	-	8.0	-	-	0.8	180	3	DFK-764S†

Power Rating (All Models) = 1 Watt, max

† (UB) - Denotes full bandwidth specification

For pin location and package outline drawings, see back pages.

PIN-OUT TABLE

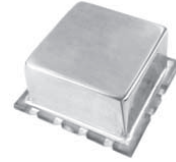
	INPUT	OUTPUT	CASE GROUND	NOT USED
#1	1	3,4,8,12,15,16	2, 5,9,13,14	
#2	1	3,4,8,12,15,16	2,5,7,11,13,14	6,9,10
#3	1	2,3,4,5,6,7	All others	-

LB = LF to 10 LF
 MB = 10 LF to HF/2
 UB = HF/2 to HF



POWER DIVIDERS

0° : 8-WAY



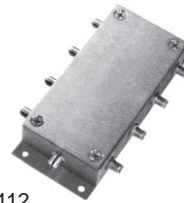
SURFACE MOUNT

FREQUENCY RANGE (MHz)	ISOLATION (dB)			INSERTION LOSS (dB)			PHASE UNBALANCE (Degrees)			AMPLITUDE UNBALANCE (dB)			PACKAGE	PIN-OUT (See Below)	MODEL
	LB TYP/MIN	MB TYP/MIN	UB TYP/MIN	LB TYP/MAX	MB TYP/MAX	UB TYP/MAX	LB MAX	MB MAX	UB MAX	LB MAX	MB MAX	UB MAX			
0.01-10	40/20	40/25	28/23	0.3/0.7	0.5/1.0	0.6/1.1	1.0	2.5	4.0	0.1	0.2	0.3	124S	1	DSS-9C1
0.01-30	33/20	30/25	35/23	0.3/0.6	0.7/0.9	0.8/1.0	1.5	3.0	4.0	0.3	0.2	0.3	124S	1	DSS-914
0.5-175	30/25	30/20	25/18	0.8/1.2	0.8/1.2	1.0/1.6	1.0	2.5	5.0	0.2	0.3	0.5	124S	1	DSS-9L2
1-200	30/25	30/20	25/20	0.8/1.2	0.8/1.2	1.0/1.5	1.5	3.0	6.0	0.2	0.3	0.4	124S	1	DSS-915
1-500	25/20	30/20	30/20	1.0/1.8	1.8/2.0	1.8/2.7	3.0	6.0	12.0	0.2	0.3	0.5	124S	1	DSS-916



THROUGH HOLE MOUNT(16 - Pin)

FREQUENCY RANGE (MHz)	ISOLATION (dB)			INSERTION LOSS (dB)			PHASE UNBALANCE (Degrees)			AMPLITUDE UNBALANCE (dB)			PACKAGE	PIN-OUT (See Below)	MODEL
	LB TYP/MIN	MB TYP/MIN	UB TYP/MIN	LB TYP/MAX	MB TYP/MAX	UB TYP/MAX	LB MAX	MB MAX	UB MAX	LB MAX	MB MAX	UB MAX			
0.01-10	40/20	40/25	28/23	0.3/0.7	0.5/1.0	0.6/1.1	1.0	2.5	4.0	0.1	0.2	0.3	124	2	DSP-9C1
0.01-30	33/20	30/25	35/23	0.3/0.6	0.7/0.9	0.8/1.0	1.5	3.0	4.0	0.3	0.2	0.3	124	3	DSP-914
0.5-175	30/25	30/20	25/18	0.8/1.2	0.8/1.2	1.0/1.6	1.0	2.5	5.0	0.2	0.3	0.5	124	2	DSP-9L2
1-200	30/25	30/20	25/20	0.8/1.2	0.8/1.2	1.0/1.5	1.5	3.0	6.0	0.2	0.3	0.4	124	3	DSP-915
1-500	25/20	30/20	30/20	1.0/1.8	1.8/2.0	1.8/2.7	3.0	6.0	12.0	0.2	0.3	0.5	124	2	DSP-916



112



170

COAXIAL CONNECTOR

FREQUENCY RANGE (MHz)	ISOLATION (dB)			INSERTION LOSS (dB)			PHASE UNBALANCE (Degrees)			AMPLITUDE UNBALANCE (dB)			PACKAGE	PIN-OUT (See Below)	MODEL
	LB TYP/MIN	MB TYP/MIN	UB TYP/MIN	LB TYP/MAX	MB TYP/MAX	UB TYP/MAX	LB MAX	MB MAX	UB MAX	LB MAX	MB MAX	UB MAX			
0.01-30	33/20	30/25	35/23	0.3/0.6	0.7/0.9	0.8/1.0	1.5	3.0	4.0	0.3	0.2	0.3	112	4	DSK-714*
1-200	30/25	30/20	25/20	0.8/1.2	0.8/1.2	1.0/1.5	1.5	3.0	6.0	0.2	0.3	0.3	112	4	DSK-715*
1-500	25/20	30/20	30/20	1.0/1.8	1.8/2.0	1.8/2.7	3.0	6.0	10.0	0.2	0.3	0.5	112	4	DSK-716*
5-200	30/20	25/20	25/20	0.4/0.7	0.5/0.9	0.7/1.2	4.0	6.0	10.0	0.15	0.2	0.3	170	2	DSK-773B■
30-1000	23/20	25/20	23/20	0.8/1.2	1.6/2.1	2.5/2.8	3.0	8.0	12.0	0.3	0.4	0.7	112	4	DSK-810S

Power Rating (All Models) = 1 Watt, max

* Select female connector suffix:

"B" = BNC, "S" = SMA, "N" = Type N, "T" = TNC

■ 75 Ohm Model

For pin location and package outline drawings, see back pages.

PIN-OUT TABLE

	INPUT	OUTPUT	CASE GROUND	NOT USED
# 1	2	1,4,5,8,9,12,13,16	3, 14,15	-
# 2	2	1,4,5,8,9,12,13,16	3,6,7,14,15	10,11
# 3	2	1,4,5,8,9,12,13,16	All Other	-
# 4	1	2,3,4,5,6,7,8,9	-	-

LB = LF to 10 LF
 MB = 10 LF to HF/2
 UB = HF/2 to HF



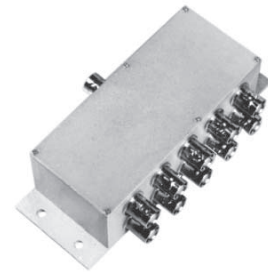
POWER DIVIDERS

0° : 10-WAY



THROUGH HOLE MOUNT (16 -Pin)

FREQUENCY RANGE (MHz)	ISOLATION (dB)			INSERTION LOSS (dB)			PHASE UNBALANCE (Degrees)			AMPLITUDE UNBALANCE (dB)			PACKAGE	PIN-OUT (See Below)	MODEL
	LB TYP/MIN	MB TYP/MIN	UB TYP/MIN	LB TYP/MAX	MB TYP/MAX	UB TYP/MAX	LB MAX	MB MAX	UB MAX	LB MAX	MB MAX	UB MAX			
1-150	36/23	27/23	23/18	0.3/0.6	0.4/0.8	1.0/1.3	1	4	10	0.1	0.2	0.3	124	1	DXP-9A2



COAXIAL CONNECTOR

FREQUENCY RANGE (MHz)	ISOLATION (dB)			INSERTION LOSS (dB)			PHASE UNBALANCE (Degrees)			AMPLITUDE UNBALANCE (dB)			PACKAGE	PIN-OUT (See Below)	MODEL
	LB TYP/MIN	MB TYP/MIN	UB TYP/MIN	LB TYP/MAX	MB TYP/MAX	UB TYP/MAX	LB MAX	MB MAX	UB MAX	LB MAX	MB MAX	UB MAX			
5-200	25/20	32/23	25/18	0.8/1.3	0.9/1.2	1.2/1.6	4.0	6.0	8.0	0.5	0.6	0.8	171	2	DXK-772B■
5-200	25/20	32/25	25/20	0.7/1.2	0.9/1.1	1.2/1.5	4.0	6.0	8.0	0.5	0.6	0.8	171	2	DXK-702B

Power Rating (All Models) = 1 Watt, max

■ 75 Ohm Model

For pin location and package outline drawings, see back pages.

PIN-OUT TABLE

	INPUT	OUTPUTS	CASE GROUND
#1	1	2,3,4,8,9,12,13,14,15,16	5,6,7,10,11
#2	1	2,3,4,5,6,7,8,9,10,11	-

LB = LF to 10 LF
 MB = 10 LF to HF/2
 UB = HF/2 to HF

POWER DIVIDERS

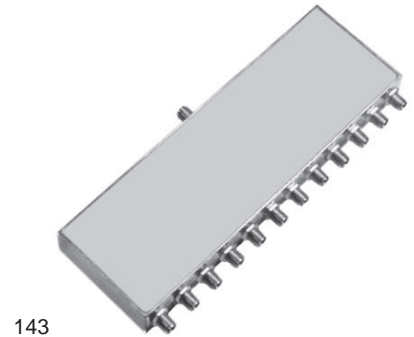
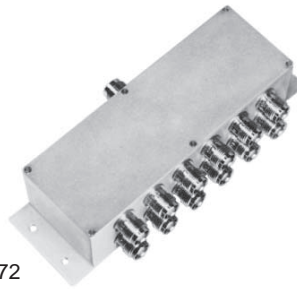
0° : 12-WAY



THROUGH HOLE MOUNT(16 - Pin)

FREQUENCY RANGE (MHz)	ISOLATION (dB)			INSERTION LOSS (dB)			PHASE UNBALANCE (Degrees)			AMPLITUDE UNBALANCE (dB)			PACKAGE	PIN-OUT (See Below)	MODEL
	LB TYP/MIN	MB TYP/MIN	UB TYP/MIN	LB TYP/MAX	MB TYP/MAX	UB TYP/MAX	LB MAX	MB MAX	UB MAX	LB MAX	MB MAX	UB MAX			
2-100	25/20	33/20	34/20	0.4/0.8	0.4/0.8	0.6/1.0	2.0	2.0	3.0	0.4	0.4	0.6	124	1	DLP-901

COAXIAL CONNECTOR



FREQUENCY RANGE (MHz)	ISOLATION (dB)			INSERTION LOSS (dB)			PHASE UNBALANCE (Degrees)			AMPLITUDE UNBALANCE (dB)			PACKAGE	PIN-OUT (See Below)	MODEL
	LB TYP/MIN	MB TYP/MIN	UB TYP/MIN	LB TYP/MAX	MB TYP/MAX	UB TYP/MAX	LB MAX	MB MAX	UB MAX	LB MAX	MB MAX	UB MAX			
3-250	25/20	32/25	30/23	1.0/1.3	0.9/1.2	1.6/2.0	3.0	6.0	10	0.3	0.4	0.8	143	2	DLK-712S
5-200	25/20	32/25	25/20	0.7/1.2	0.9/1.1	1.2/1.5	4.0	6.0	8.0	0.5	0.6	0.8	172	2	DLK-702B
5-200	25/20	32/23	25/18	0.8/1.3	0.9/1.2	1.2/1.6	4.0	6.0	8.0	0.5	0.6	0.8	172	2	DLK-772B ■
850-1000	---/---	---/---	20/15	---/---	---/---	3.0/4.0	-	-	8.0	-	-	2.0	143	2	DLK-7L4S †

Power Rating (All Models) = 1 Watt, max

■75 Ohm Model

† (UB) - Denotes full bandwidth specification

For pin location and package outline drawings, see back pages.

LB = LF to 10 LF
MB = 10 LF to HF/2
UB = HF/2 to HF

PIN-OUT TABLE

	INPUT	OUTPUTS	CASE GROUND
#1	6	1,2,3,4,5,8,9,12,13,14,15,16	7,10,11
#2	1	2,3,4,5,6,7,8,9,10,11,12,13	-