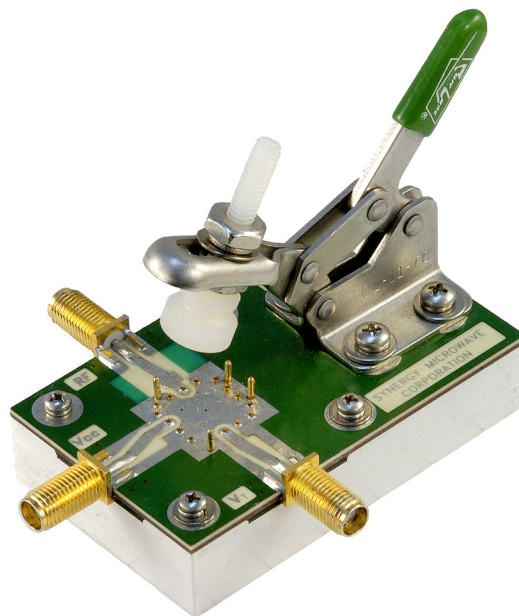


## VCO Quick Test™

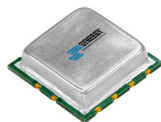
- Unit can be mounted directly on to the fixture and clamped without requiring any solder attachment to the fixture.
- All ports are provided with SMA female connectors.
- Suitable for high volume testing.
- The fixtures are rugged in construction and reliable.
- Low cost.



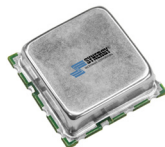
Available for package styles show below.



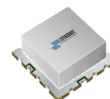
124S



124SL



165S

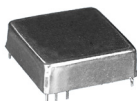


174

Also available for through hole package shown below without the clamp.



124



165